

Monoclonal anti-Roactemra® (Tocilizumab): Detection of Roactemra and anti-Roactemra (ADA) Product reference: DDX5020-DDX5022

Description

Roactemra® (Tocilizumab) is a humanized antibody targeting the interleukine-6 receptor. This immunosuppressive drug is mainly used for the treatment of rheumatoid arthritis and systemic juvenile idiopathic arthritis. We have generated a panel of anti-Roactemra (anti-Tocilizumab) murine monoclonal antibodies. These antibodies can be used to develop and calibrate Roactemra (Tocilizumab) and anti-Roactemra (anti-Tocilizumab) detection assays.

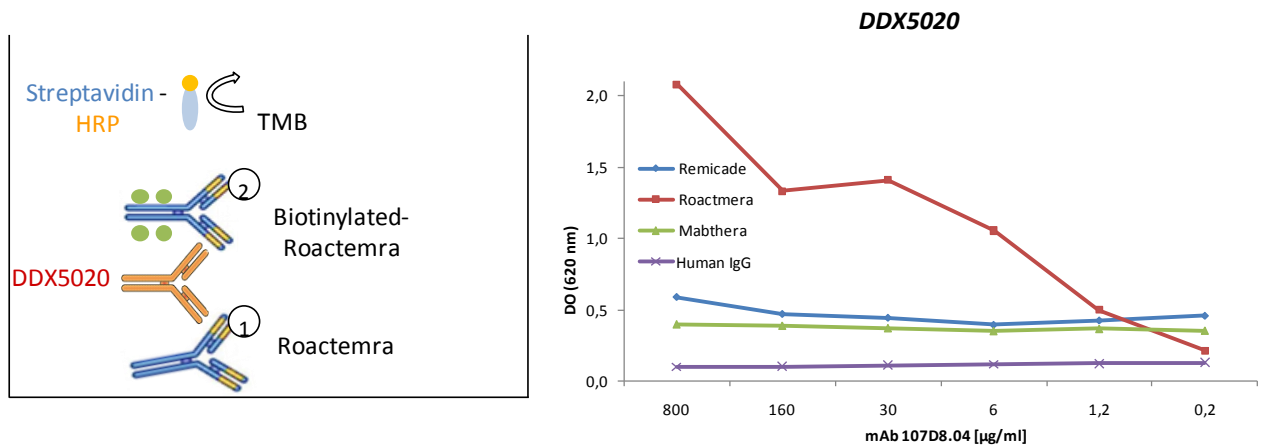
Species: mouse
Specificity: Roactemra® (Tocilizumab)
Immunogen: Roactemra® (Roche) (Tocilizumab)
Cross-reactivity: negative for remicade (Infliximab) and mabthera (Rituximab)
Purification: QMA Hyper D ion exchange chromatography
Formulation/size: **Purified:** 100 µg in 200 µl / 50 µg in 100 µl Tris-NaCl pH 8
Coupled: 100 µg in 200 µl / 50 µg in 100 µl PBS 50% glycerol

Available formats:

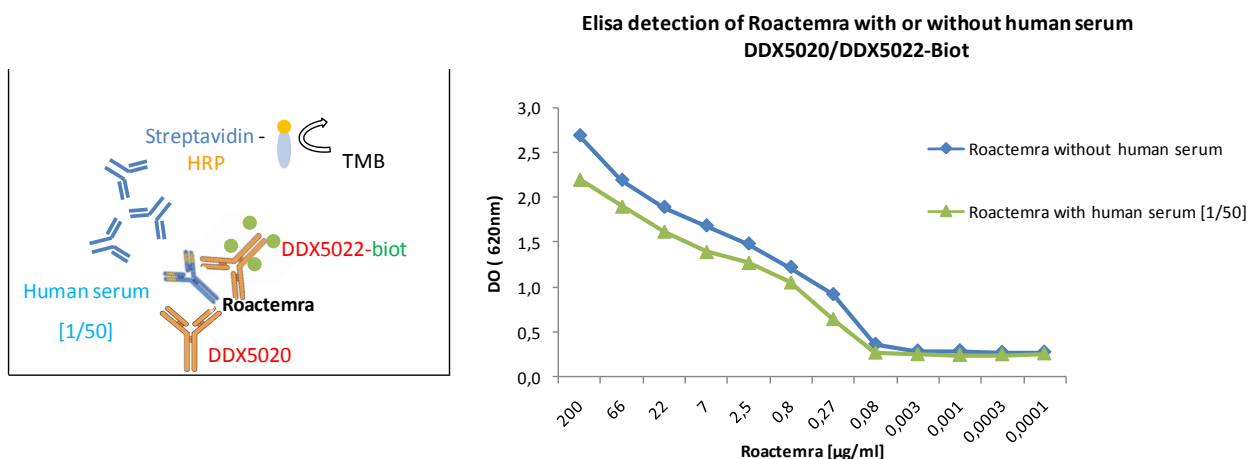
Reference N°		Format	Clone	Isotype	Application tested
50µg	100µg				
DDX5020P-50	DDX5020P-100	Purified	107D8.04	IgG2a	Bridging ELISA positive control for anti- Roactemra detection. Capture antibody for Roactemra detection
DDX5020B-50	DDX5020B-100	Biotin			Detection antibody for Roactemra detection
DDX5021P-50	DDX5021P-100	Purified	101G1.01	IgG1	Capture antibody for Roactemra detection
DDX5022B-50	DDX5022B-100	Biotin	105D9.05	IgG1	Detection antibody for Roactemra detection

Other clones available on request

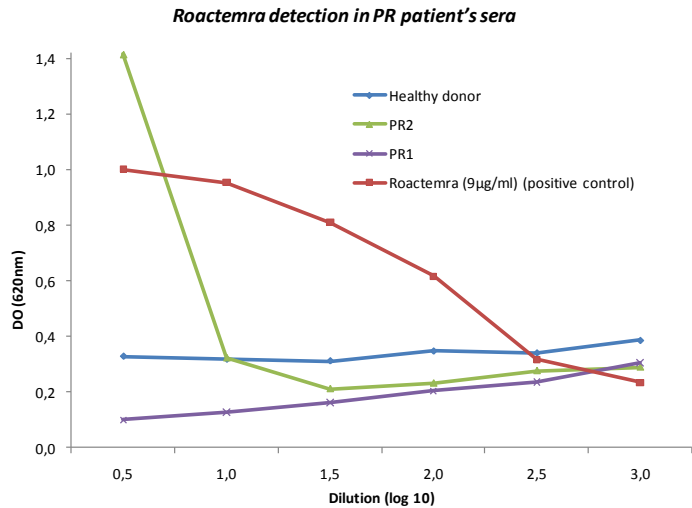
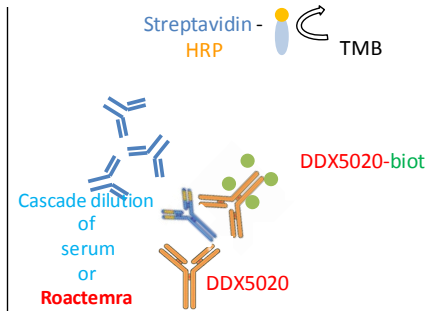
Positive control for anti-Roactemra (anti-Tocilizumab) detection using bridging Elisa



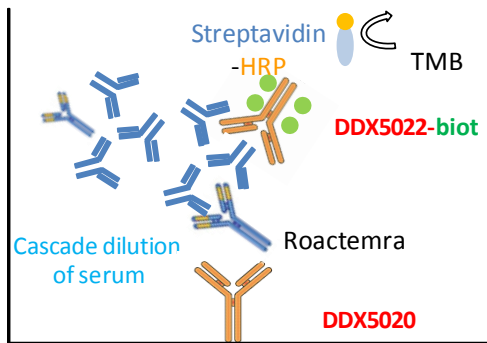
Roactemra (Tocilizumab) detection by DDX5020/101G1.01 is not affected by human serum



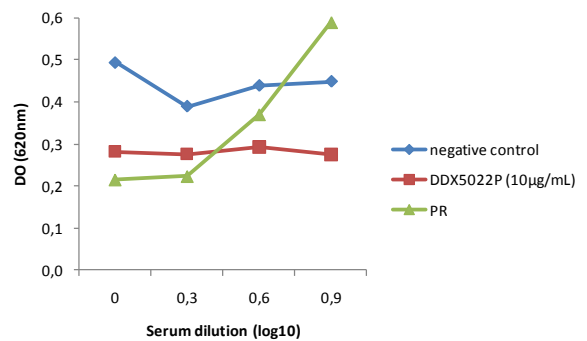
Roactemra (Tocilizumab) detection by capture Elisa in serum from Roactemra (Tocilizumab) -treated polyarthritis rheumatoid patients



Anti-Roactemra (Anti-Tocilizumab) detection by competitive Elisa in serum from Roactemra (Tocilizumab) -treated polyarthritis rheumatoid patients



Anti-Roactemra detection in serum from PR patient (Roactemra 2µg/ml)



Other clones available on request

#catalog	Clone	Specificity			Detection	Capture	Bridging	Isotype
		ROACTEMRA	REMICADE	MABTHERA				
DDX5022	105D9.05	+	-	-	++++	-	++	IgG1
	107E11.04	+	-	-	-	+/-	-	ND
	109C12.06	+	-	-	++	++	+	A confirmer
	109B11.04	+	-	-	-	+/-	-	ND
	110A3.09	+	-	-	+++	++++	+	ND
	110E11.15	+	-	-	+++	++++	++	IgG1
	110H10.08	+	-	-	+/-	-	-	ND
	110E9.10	+	-	-	-	+/-	-	ND
DDX5021	101G1.01	+	-	-	++++	++	++	IgG1
DDX5020	107D8.04	+	-	-	++++	++++	+++	IgG2a

Usage recommendation:

- *This monoclonal antibody may be used between 5-25µg/ml.
- *Optimal dilution should be determined by each laboratory for each application.
- *Coupled antibody: to maintain RT before use.

Aliquot storage conditions:

- 20°C. KEEP CONTENTS STERILE: no preservative.**
- Purified antibodies: avoid repeated freeze/thaw cycles.**
- Coupled antibodies: glycerol protects from freezing.**