

## Monoclonal anti-Mabthera® (Rituximab): detection of Mabthera and anti-Mabthera®(ADA) Product reference: DDX5010-DDX5011

### Description

Mabthera® (Rituximab) is a chimeric monoclonal antibody targeting the CD20 protein expressed on B cell surface. Mabthera® (Rituximab) destroys B cells and is therefore used to treat diseases such as lymphomas, leukemias, transplant rejection, and autoimmune disorders. Mabthera® (Rituximab) has also been shown to be an effective rheumatoid arthritis treatment, in cases where anti-TNF- $\alpha$  therapy is not satisfactory. We have generated a panel of anti-Mabthera® (anti-Rituximab) monoclonal murine antibodies. These antibodies can be used to develop and calibrate Mabthera (Rituximab) and anti-Mabthera (anti-Rituximab) detection assays.

<b>Species:</b>	mouse
<b>Specificity:</b>	Mabthera® (Rituximab)
<b>Immunogen:</b>	Mabthera® (Roche) (Rituximab)
<b>Cross-reactivity:</b>	negative for remicade (infliximab) and roactemra (tocilizumab)
<b>Purification:</b>	QMA Hyper D ion exchange chromatography
<b>Formulation/size:</b>	<b>Purified:</b> 100 $\mu$ g in 200 $\mu$ l / 50 $\mu$ g in 100 $\mu$ l Tris-NaCl pH 8 <b>Coupled:</b> 100 $\mu$ g in 200 $\mu$ l / 50 $\mu$ g in 100 $\mu$ l PBS 50% glycerol

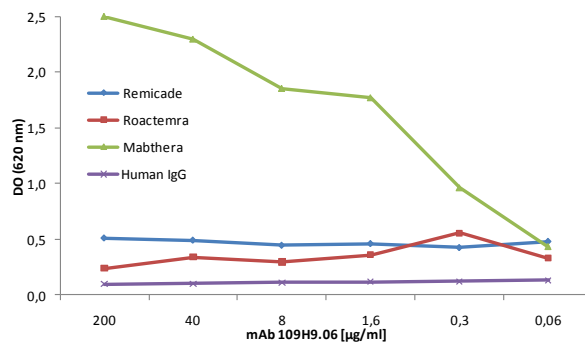
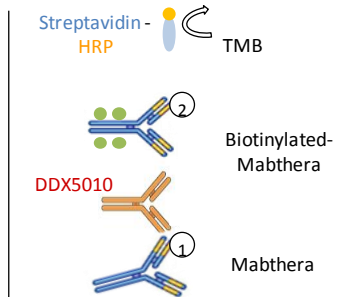
### Available formats:

Reference N°		Format	Clone	Isotype	Application tested
50 $\mu$ g	100 $\mu$ g				
DDX5010P-50	DDX5010P-100	Purified	109H9.06	IgG1	Bridging Elisa positive control for anti-Mabthera detection, Capture antibody for anti-Mabthera detection
DDX5010B-50	DDX5010B-100	Biotin			Detection antibody for Mabthera detection
DDX5011P-50	DDX5011P-100	Purified	108F11.02	IgG1	Bridging Elisa positive control for anti-Mabthera detection
DDX5011B-50	DDX5011B-100	Biotin			Detection antibody for anti-Mabthera detection

*Other clones available on request*

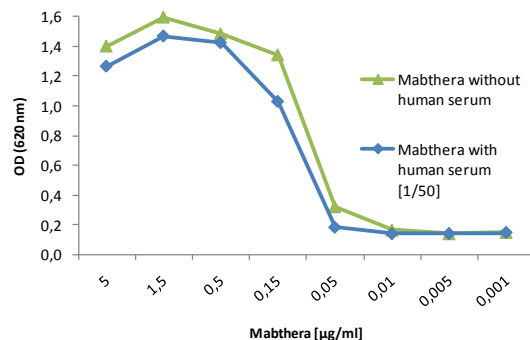
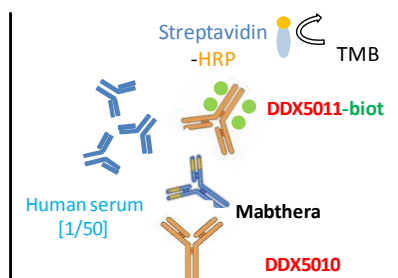
### Positive control for anti-mabthera(anti-Rituximab) detection using bridging Elisa

**Bridging ELISA positive control for anti-Mabthera detection  
mAb 109H9.06 (DDX5010)**

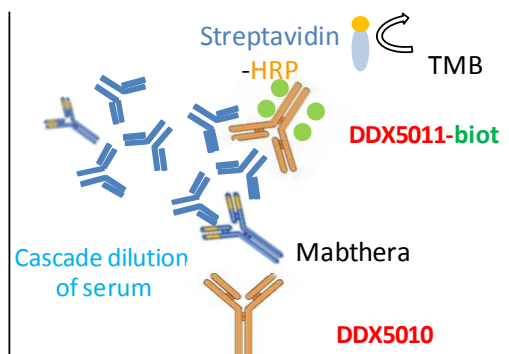


### Mabthera(Rituximab) detection is not affected by human serum

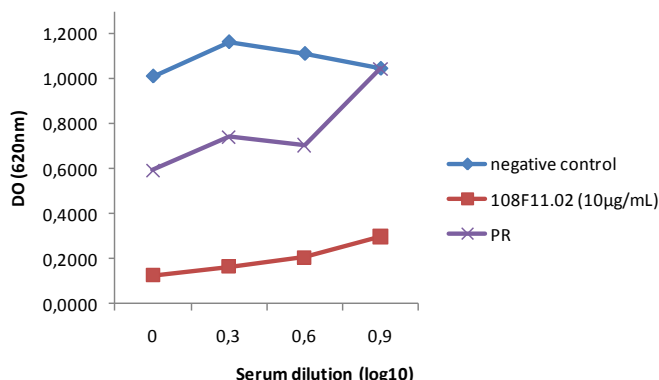
**ELISA detection of Mabthera with or without human serum  
DDX5010/DDX5011-biot**



**Anti-Mabthera (Anti-Rituximab) (ADA) detection by competition ELISA in serum from Mabthera (Rituximab)-treated polyarthritis rheumatoid patients**



**Anti-Mabthera detection in serum from PR patient**



**Other clones available on request**

# catalog	Clone	Specificity			Detection	Capture	Bridging	Isotype
		ROACTEMRA	REMICADE	MABTHERA				
	102B9.03	-	-	+	++	+++	+	ND
	107E9.03	-	-	+	++++	++++	+/-	ND
	107G12.06	-	-	+	+/-	-	-	ND
	107H12.02	-	-	+	++	+++	-	IgG1
	108G9.10	-	-	+	+++	+++	+	ND
	108H2.12	-	-	+	+++	++	-	ND
	108D1.23	-	-	+	+++	+++	+	ND
	108H5.02	-	-	+	++	+++	-	ND
	109A2.02	-	-	+	+	-	-	ND
	109B9.04	-	-	+	+	-	-	ND
	110D7.09	-	-	+	-	-	++	ND
	110B9.02	-	-	+	+++	+/-	+++	IgG1
	110F8.09	-	-	+	+/-	-	-	ND
	110F5.09	-	-	+	++++	++++	+++	IgG1
<b>DDX5010</b>	109H9.06	-	-	+	++++	++	++++	IgG1
<b>DDX5011</b>	108F11.02	-	-	+	+++	+++	+++	IgG1
	107B8.02	-	-	+	++	++++	-	IgG1

**Usage recommendation:**

- \*This monoclonal antibody may be used between 5-25µg/ml.
- \*Optimal dilution should be determined by each laboratory for each application.
- \*Coupled antibody: to maintain RT before use.

**Aliquot storage conditions:**

- 20°C. KEEP CONTENTS STERILE: no preservative.**
- Purified antibodies: avoid repeated freeze/thaw cycles.**
- Coupled antibodies: glycerol protects from freezing.**