

# Monoclonal Anti-human SEMA-6A

**Product reference: DDX0463**

## Description

Semaphorins represent a large family composed of 19 secreted, GPI-linked or transmembrane members divided into 5 classes (3 to 7) and characterized by the presence of a 500 amino acid Sema domain in the N-terminus. Initially described for their role in axon guidance and apoptosis during neuronal development, some semaphorins like the class 4 regulate immune functions and are involved in organogenesis and angiogenesis. The transmembrane class 6 semaphorins include 4 members (SEMA-6A to 6D). SEMA-6A features an intracellular binding site for regulatory Evl protein. In the immune system, SEMA6A protein is restricted *in vitro* and *in vivo* to an activation status of Langerhans cells. (Gautier G *et al.*, 2006 *Am J Pathol.*, 168: 453-65).

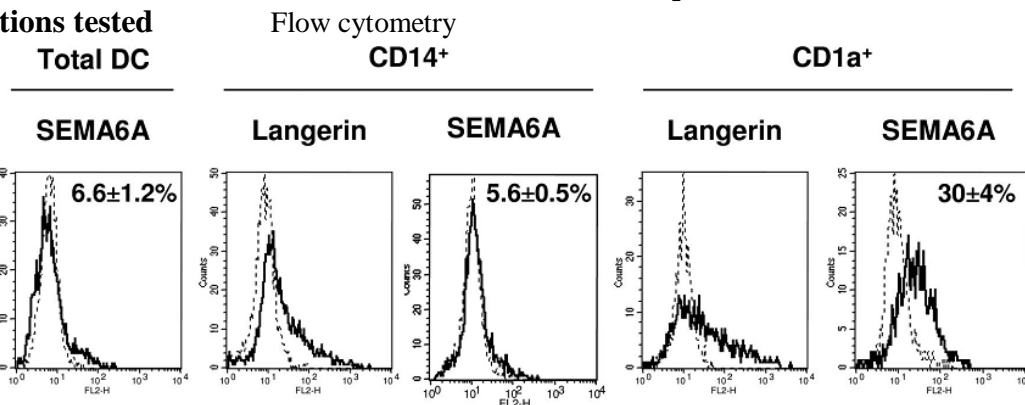
**Clone:** 118E7  
**Species:** mouse  
**Specificity:** human SEMA-6A (epitope in extracellular domain)  
**Immunogen:** human recombinant SEMA-6A  
**Species cross- reactivity:** nd  
**Isotype:** IgG1  
**Purification:** QMA hyper D ion exchange chromatography  
**Formulation/size:** **Purified:** 100 µg in 200µl / 50 µg in 100 µl Tris-NaCl pH 8  
**Coupled:** 100 µg in 200µl / 50 µg in 100 µl PBS 50% glycerol

**Available formats:**

Reference N°		Format	Application tested
50 µg	100 µg		
DDX0463P-50	DDX0463P-100	Purified	surface Flow cytometry
DDX0463A488-50	DDX0463A488-100	Alexa-fluor®488	surface Flow cytometry
DDX0463A546-50	DDX0463A546-100	Alexa- fluor®546	IF
DDX0463A647-50	DDX0463A647-100	Alexa- fluor®647 ( <i>on request</i> )	Flow cytometry

*Other clones available on request*

**Applications tested**



**Usage recommendation:**

\*This monoclonal antibody may be used between 5-20 µg/ml  
 \*Optimal dilution should be determined by each laboratory for each application  
 \*Coupled antibody: to maintain RT before using

**Aliquot storage conditions**

**-20°C. KEEP CONTENTS STERILE: no preservative.**  
**Purified antibodies: avoid repeated freeze/thaw cycles.**  
**Coupled antibodies: glycerol protects from freezing.**

**Not for use in Humans. For research purpose only**