

Monoclonal Anti-human, mouse, rat Langerin/CD207

Product reference: DDX0373

Description

Langerin/CD207 is a transmembrane C-type lectin receptor (CLR) of epidermal and mucosal Langerhans cells (LCs) that induces Birbeck's granule formation. Langerin features a single carbohydrate recognition domain (CRD) with mannose-type specificity in its extracellular portion. Langerin is unique among the CLRs in that it contains an intracellular domain with a proline-rich motif. Langerin expression has not been reported outside the DC system. (Valladeau J et al, 2002 J Immunol, 168 : 782-792) (Douillard P et al, 2005 J Invest Dermatol, 125: 983-994)

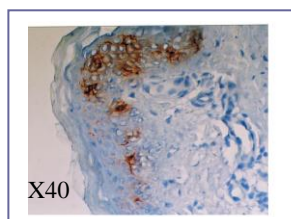
Clone: 923B7
Species: rat
Specificity: human Langerin (extracellular epitope)
Immunogen: human Langerin-transfected eukaryotic cells
Species cross-reactivity: human, rat, mouse, swine
Isotype: IgG2a
Purification: QMA Hyper-D ion exchange chromatography
Formulation/size: **Purified:** 100 µg in 200µl / 50 µg in 100 µl Tris-NaCl pH 8
Coupled: 100 µg in 200µl / 50 µg in 100 µl PBS 50% glycerol

Available formats:

Reference N°		Format	Application tested
50 µg	100 µg		
DDX0373P-50	DDX0373P-100	Purified	IHC, Flow cytometry
DDX0373A488-50	DDX0373A488-100	Alexa-fluor@488	IF surface Flow cytometry
DDX0373A546-50	DDX0373A546-100	Alexa- fluor@546	IF
DDX0373A647-50	DDX0373A647-100	Alexa- fluor@647	Flow cytometry
DDX0373B-50	DDX0373B-100	Biotin	Flow cytometry

Other clones available on request

Applications tested: IHC



*IHC on human skin cryosections
with 923B7-HRP*

Usage recommendation: *This monoclonal antibody may be used between 5-20 µg/ml
*Optimal dilution should be determined by each laboratory for each application
*Coupled antibody: to maintain RT before using

Aliquot storage conditions: -20°C. **KEEP CONTENTS STERILE: no preservative.**
Purified antibodies: avoid repeated freeze/thaw cycles.
Coupled antibodies: glycerol protects from freezing .

Not for use in Humans. For research only