

Monoclonal Anti-human Basophil

Product reference: DDX0030

Description

Basophils and mast cells are multifunctional hematopoietic effector cells involved in allergic and inflammatory reactions. Immediate allergy is caused by release of chemical mediators by these cell types. In human peripheral blood, 212H6.16 is an antibody specific to a yet non-identified cell-surface structure (~30KDa in reduced WB conditions and ~46KDa in non-reduced WB conditions) present on basophils. 212H6.16 does not induce basophil degranulation, and is therefore a valuable tool for the isolation and study of human basophils. Tonsillar epithelium and skin keratinocytes are also stained by 212H6 *in situ*: antigen expression in tonsil is restricted to cells lining the epithelial crypts.

(Bendriss-Vermare N. et al, *Leukocyte Typing VII, White Cell Differentiation Antigen MC13, part 9, myeloid cells, 425-30, 2001; Editor Mason*)

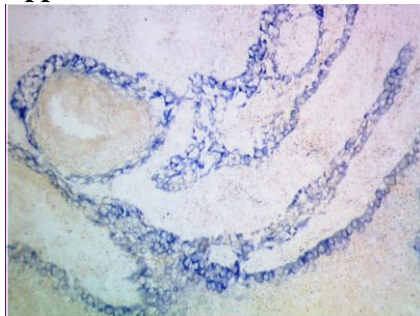
Clone:	212H6.16
Species:	mouse
Specificity:	human basophils and mast cells
Immunogen:	enriched-human tonsillar pDCs
Species cross-reactivity:	dog, no-cross reactivity on mouse basophil
Isotype:	IgM
Purification:	QMA Hyper D Ion exchange chromatography
Formulation/size:	Purified: 100 µg in 200 µl / 50 µg in 100 µl Tris-NaCl pH 8
	Coupled: 100 µg in 200 µl / 50 µg in 100 µl PBS 50% glycerol

Available formats:

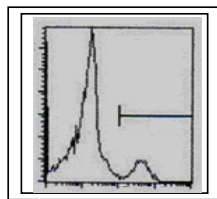
Reference N°		Format	Application tested
50µg	100µg		
DDX0030P-50	DDX0030P-100	Purified	IHC, sorting cell, WB
DDX0030A488-50	DDX0030A488-100	Alexa-fluor@488	Flow Cytometry
DDX0030A546-50	DDX0030A546-100	Alexa- fluor@546	IF
DDX0030A647-50	DDX0030A647-100	Alexa- fluor@647	Flow Cytometry
DDX0030B-50	DDX0030B-100	Biotin (<i>on request</i>)	IHC, WB, Flow cytometry

Other clones available on request

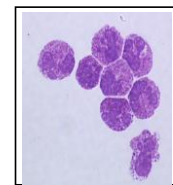
Applications tested: MACS- separation and flow cytometry, IHC frozen section.



IHC staining of tonsil epithelial crypts with 212H6



FACS analysis of human PBMC stained with 212H6-A488



Giemsa staining of Macs-isolated 212H6+ cells. Absence of degranulation

Usage recommendation:

- *This monoclonal antibody may be used between 5-20 µg/ml.
- *Optimal dilution should be determined by each laboratory for each application.
- *Coupled antibody: to maintain RT before use.

Aliquot storage conditions: -20°C. **KEEP CONTENTS STERILE: no preservative.**
Purified antibodies: avoid repeated freeze/thaw cycles.
Coupled antibodies: glycerol protects from freezing.

Not for use in Humans. For research purpose only