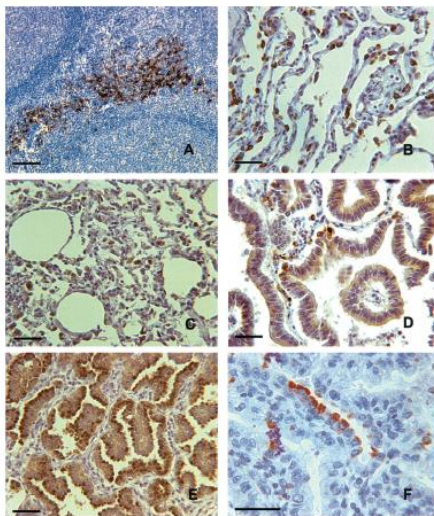


Antibodies against CD208/DC-LAMP

Antigen	Reference DDX	Clone	Isotype	Applications
CD208/DC- LAMP	DDX0190	104G4	IgG1	Intracyto Flow cytometry, IHC, IF
	DDX0191	1010E1.01	IgG2a	Intra Flow cytometry, IHC, IF, IHC paraffin (formol, Bouin) in human [⊗]
	DDX0192	1006F7.05	IgG2a	Surface and Intra Flow cytometry, IHC, IF
	DDX0193	109G3	IgG1	Intra Flow cytometry, IHC, IF [⊗]
	DDX0195	208B5	IgG3	Intra Flow cytometry for mouse and human, Flow cytometry, IHC [⊗]

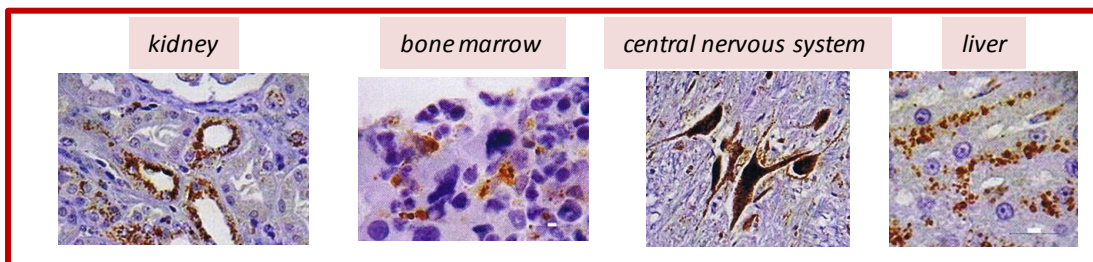
DC-LAMP expression in human and sheep tissues



- A- Human tonsil
- B- Human lung
- C- Sheep lung
- D- Human bronchioalveolar adenocarcinoma
- E- Sheep pulmonary adenocarcinoma induced by JSRV
- F- Luminal side of human adenocarcinoma cells

Salaun et al, AJP, March 2004, vol 164, n°3

DC-LAMP expression in canine tissues



Bonnefont C., Thesis, 2006