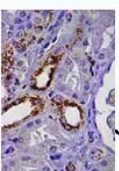
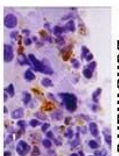




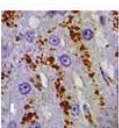
Veterinary tools



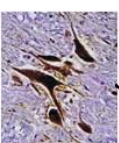
kidney



bone marrow



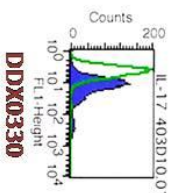
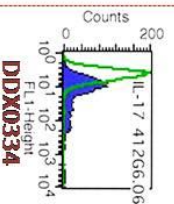
liver



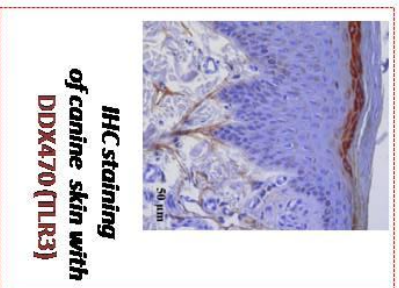
nervous system

IHC staining of canine tissues DDX0191 (DC-LAMP)

Reference	Antigen	Clone
DDDX0010	ASGPR/ CD301	125A10.03
DDDX0030	Basophil	212H6.16
DDDX0040		108H10.03
DDDX0042	CD303	110H7.05
DDDX0045		109B8
DDDX0191	DC-LAMP	1010E1.01
DDDX0202	DC-SGN/ CD209	102E11.06
DDDX0220	DORA/IGSF6	104A10.01
DDDX0283	MMP12	703D10
DDDX0300	IL-3-R α / CD123	107D2.08
DDDX0330	IL17A	403D10.01
DDDX0334		412G6.06
DDDX0340	IRAK-4	6F8
DDDX0360	Langrini/ CD207	808E10.01
DDDX0363		DCGM 4/122D5.03
DDDX0440	Neuropilin/CD304	211H6.01
DDDX0470		619F7.06
DDDX0472		722E2.01
DDDX0474	TLR3/CD283	713B4.06
DDDX0475		716G10.15
DDDX0500	TLR7/CD287	66H3
DDDX0700	IL-7-R α /CD127	R34-34
DDDX1400	My888	603E10.05
DDDX1401		603E10.06

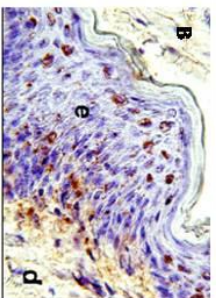
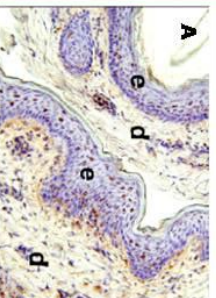
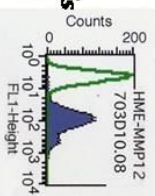


Intracellular FACS staining of canine cells (Bonnefont C, 2010)



**IHC staining
of canine skin with
DDDX470 (TLR3)**

Intracellular FACS staining of canine cells DDX0283 (MMP12)



**Porcine skin cryosections stained with DDX0361
(langerin) A:16X; B:40X; e:epidermis; d:dermis.**

monoclonal antibodies validated on porcine cells

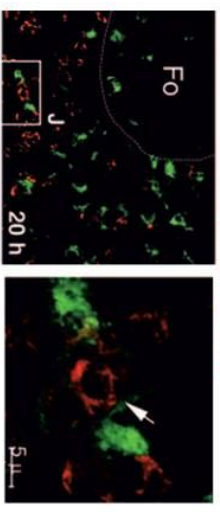
Reference	Antigen	Clone
DDDX0040	CD303	108H10.03
DDDX0045		109B8
DDDX0061	CD1a	201B5.08
DDDX0300	CD123	107D2
DDDX0340	IRAK4	6F8
DDDX0360		808E10.01
DDDX0361		310E7.02
DDDX0362		929F3.01
DDDX0368	Langrini/ CD207	306G9.01
DDDX0373		923B7
DDDX0375		929F7
DDDX0380	M. amose-R/	122D2.08
DDDX0440	Neuropilin/CD304	211H6.01
DDDX0472		722E2.01
DDDX0474	TLR3	713E4.06
DDDX1400		603E10.05
DDDX1401	Myd88	603E10.06

Veterinary tools

monoclonal antibodies validated on ovine cells

Reference	Antigen	Clone
DDDx0045	CD303	109B8
DDDx0150	CD54	117G12.02
DDDx0190	DC-LAMP/ CD208	104G4
DDDx0191		1010E1.01
DDDx0380	Mannose-R/ CD206	122D2.08
DDDx0381	Mannose-R-Ikε/CD206-Ikε	118F2.02
DDDx0472		722E2.01
DDDx0474	HMB/MMP12	713B4.06
DDDx0475		716G10.15

Sheep submaxillary lymph node cortex cryosection DDDx0190 (DC-LAMP)



20h post GFP-SA0 injection in the oral mucosa
CD11b (green) and 104 G4 (red)

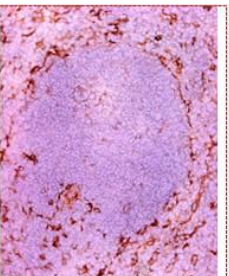


monoclonal antibodies validated on murine cells

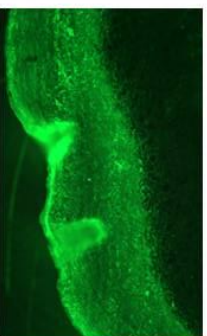
Reference	Antigen	Clone	Reference	Antigen	Clone
DDDx0020	DEC205/CD205	HB290D/e-205	DDDx0360		808E10.01
DDDx0041	CD303	104C12.08	DDDx0361		310F7.02
DDDx0043		124B3.13	DDDx0362	Langerin/ CD207	929F3.01
DDDx0091	mouse CD8 α	53.6.72(Y12)	DDDx0368		306G9.01
DDDx0191	DC-LAMP	1010E1.01	DDDx0370		205C1
DDDx0192		1006F7.05	DDDx0373		923B7
DDDx0195		208B5	DDDx0376		918A11
DDDx0207	DC-SIGN	109E12.03	DDDx0390	pDC/IR-C/CD 317/BST2	120G8.04
DDDx0220	DORAFgSF6	104A10.01	DDDx0470		619F7.06
DDDx0334		412G6.06	DDDx0472		722E2.01
DDDx0335	IL17A	414A11.03	DDDx0474	TLR3/CD283	713B4.06
DDDx0336		408H6.01	DDDx0475		716G10.15
			DDDx0481	TLR8/CD288	307D3.01

monoclonal antibodies validated on rat cells

Reference	Antigen	Clone
DDDx0043	CD303	124B3.13
DDDx0361		310F7.02
DDDx0362		929F3.01
DDDx0368	Langerin	306G9.01
DDDx0373		923B7
DDDx0376		918A11
DDDx0470		619F7.06
DDDx0472		722E2.01
DDDx0474	TLR3/CD283	713B4.06
DDDx0475		716G10.15



**IHC staining
of
murine spleen
with
DDXx0390 (120G8/BST2)**



**IF staining of
rat footprint with
DDXx0474 (TLR3)**