

# Monoclonal anti-Remicade® (Infliximab): Detection of Remicade® and anti-Remicade (ADA) Product reference: DDX5001-DDX5002

## Description

Remicade® (Infliximab) is a chimeric monoclonal antibody targeting TNF- $\alpha$ , used for the treatment of autoimmune diseases such as rheumatoid arthritis, ankylosis spondylitis, Crohn's disease, psoriatic arthritis or ulcerative colitis. We have generated a panel of anti-Remicade® (anti-Infliximab) monoclonal murine antibodies. These antibodies can be used to develop and calibrate Remicade (Infliximab) and anti-Remicade (anti-Infliximab) detection assays.

**Species:** mouse  
**Specificity:** Remicade®(Infliximab)  
**Immunogen:** Remicade® (Janssen Biologics B.V.) (Infliximab)  
**Cross-reactivity:** negative for rituximab (mabthera) and roactemra (tocilizumab)  
**Purification:** QMA Hyper D ion exchange chromatography  
**Formulation/size:** **Purified:** 100  $\mu$ g in 200  $\mu$ l / 50  $\mu$ g in 100  $\mu$ l Tris-NaCl pH 8  
**Coupled:** 100  $\mu$ g in 200  $\mu$ l / 50  $\mu$ g in 100  $\mu$ l PBS 50% glycerol

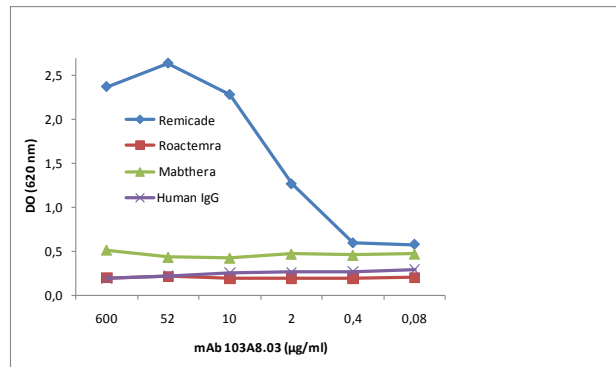
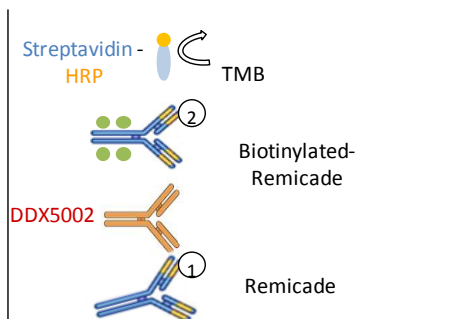
## Available formats:

Reference		Format	Clone	Isotype	Application tested
50 $\mu$ g	100 $\mu$ g				
DDX5001P-50	DDX5001P-100	Purified	108G4.03	IgG1	Bridging ELISA positive control for anti-Remicade detection, Inhibition of Remicade binding to TNF- $\alpha$ , Inhibition of Remicade binding to TNF $\alpha$ , Sandwich Elisa for Remicade detection
DDX5001B-50	DDX5001B-100	Biotin	103A8.03	IgG1	
DDX5002P-50	DDX5002P-100	Purified			
DDX5002B-50	DDX5002B-100	Biotin			

## *Other clones available on request*

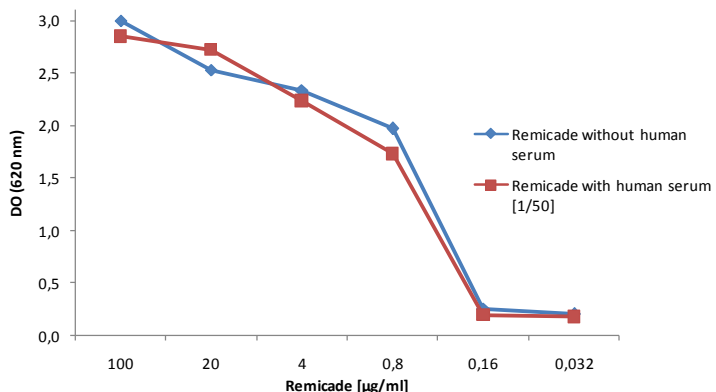
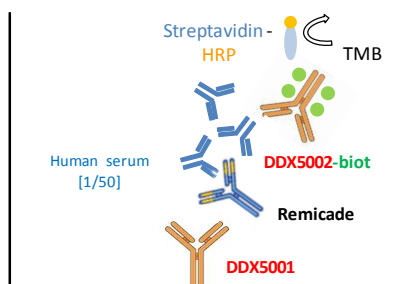
### Positive control for anti-remicade (anti-Infliximab) detection using bridging Elisa

**Bridging ELISA for anti-Remicade detection  
mAb 103A8.03 (DDX5002)**



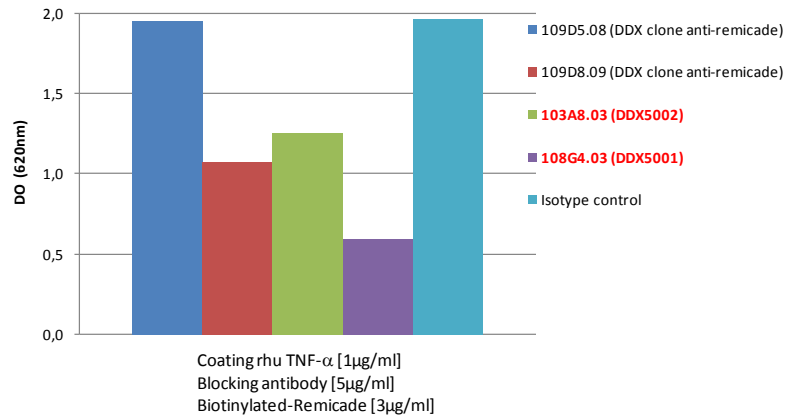
### Remicade (Infliximab) detection is not affected by human serum

**Elisa detection of Remicade with or without human serum  
DDX5001/DDX5002-Biot**

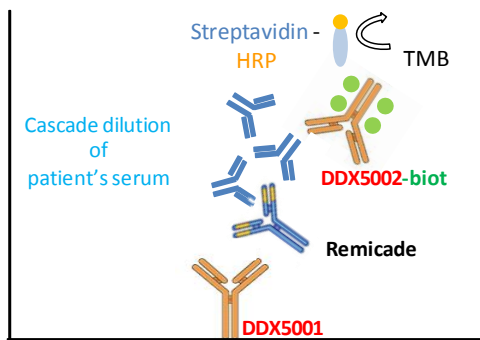


## Inhibition of Remicade (Infliximab) binding to TNF- $\alpha$

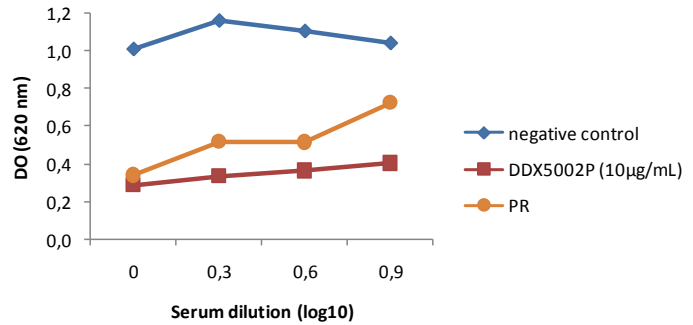
Inhibition of Remicade binding to TNF- $\alpha$



## Anti-Remicade (Anti-Infliximab) detection by competition ELISA in serum from Remicade (Infliximab) - treated polyarthritis rheumatoid patients



Anti-Remicade detection in PR patient's sera (Remicade 8μg/mL)



### Other clones available on request

# catalog	Clone	Specificity			Detection	Capture	Bridging	Inhibition of remicade binding to TNF- $\alpha$	Isotype
		ROACTEMRA	REMICADE	MABTHERA					
	102C3.04	-	+	-	+	-	-	-	ND
	107A12.04	-	+	-	+/-	-	-	-	ND
	107C8.11	-	+	-	+/-	-	-	-	ND
	108D12.11	-	+	-	+	-	-	-	ND
	108E3.11	-	+	-	+++	+	-	-	IgG1
	109D6.07	-	+	-	+/-	-	-	-	ND
	109G3.24	-	+	-	+++	+++	+	+/-	IgM
	210D4.10	-	+	-	++	+++	-	-	IgG1
	210G4.02	-	+	-	+/-	-	-	-	ND
<b>DDX5001</b>	108G4.03	-	+	-	+++	+++	++++	++++	IgG1
<b>DDX5002</b>	103A8.03	-	+	-	+++	+++	++++	++	IgG1
	109D8.09	-	+	-	++	+++	++	++	IgG2a

### Usage recommendation:

\*This monoclonal antibody may be used between 5-25μg/ml.

\*Optimal dilution should be determined by each laboratory for each application.

\*Coupled antibody: to maintain RT before use.

### Aliquot storage conditions:

**-20°C. KEEP CONTENTS STERILE: no preservative.**

**Purified antibodies: avoid repeated freeze/thaw cycles.**

**Coupled antibodies: glycerol protects from freezing.**