

Monoclonal anti-Orencia® (Abatacept): Detection of Orencia® and anti-Orencia (ADA)

Product reference: DDX5041

Description

Orencia® (Abatacept) is a fusion protein composed of the Fc region of the human immunoglobulin IgG1 fused to the extracellular domain of human CTLA-4. Orencia prevents T lymphocyte activation and is used as therapy for rheumatoid diseases.

We have generated a panel of anti-Orencia® (anti-Abatacept) monoclonal murine antibodies. These antibodies can be used to develop and calibrate Orencia (Abatacept) and anti-Orencia (anti-Abatacept) detection assays.

Species: mouse
Specificity: Orencia® (Abatacept)
Immunogen: Orencia® (Abatacept)
Purification: QMA Hyper D ion exchange chromatography
Formulation/size: **Purified:** 100 µg in 200 µl / 50 µg in 100 µl Tris-NaCl pH 8
Coupled: 100 µg in 200 µl / 50 µg in 100 µl PBS 50% glycerol

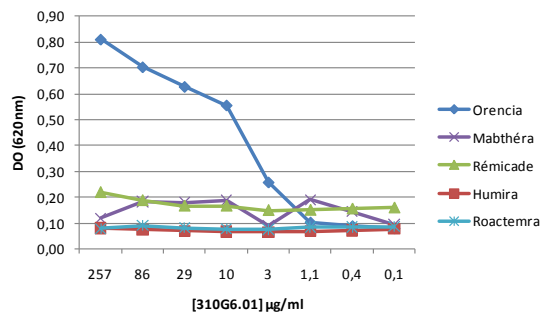
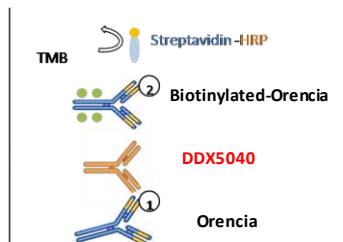
Available formats:

| Reference N° | | Format | Clone | Isotype | Application tested |
|--------------|--------------|----------|----------|---------|--------------------------------|
| 50µg | 100µg | | | | |
| DDX5041P-50 | DDX5041P-100 | Purified | 310G6.01 | IgG1 | Indirect Elisa, Bridging Elisa |
| DDX5041B-50 | DDX5041B-100 | Biotin | | | |

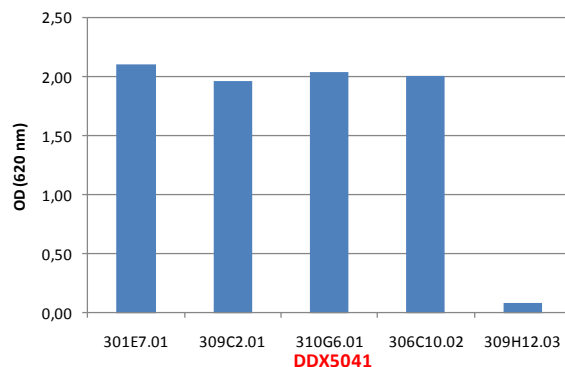
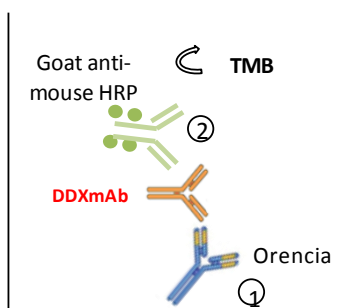
Other clones available on request

Positive control for anti-Orencia detection using bridging ELISA

**Bridging Elisa positive control for anti-Orencia detection
mAb310G6.01 (DDX5041)**



Indirect Elisa for Orencia detection



Usage recommendation:

- *This monoclonal antibody may be used between 5-25 µg/ml.
- *Optimal dilution should be determined by each laboratory for each application.
- *Coupled antibody: to maintain RT before use.

Aliquot storage conditions:

- 20°C. KEEP CONTENTS STERILE: no preservative.**
- Purified antibodies: avoid repeated freeze/thaw cycles.**
- Coupled antibodies: glycerol protects from freezing.**

Not for use in humans. For research purpose only