

# Monoclonal anti-HIV-1 gp120/160

**Product reference: DDX1302**

## Description

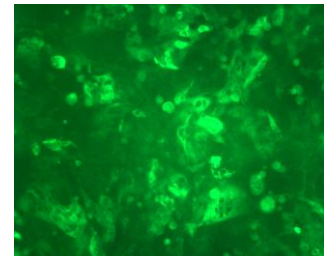
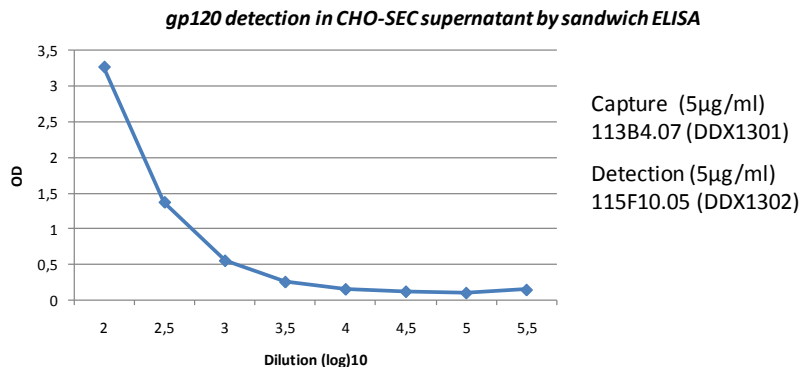
HIV *env* gene encodes for a primary env product (gp160) which is cleaved into gp120 and gp41. gp120 is anchored to the viral membrane, *via* non-covalent bonds with the transmembrane glycoprotein, gp41. Mice were immunized with gp160 and gp120 recombinant proteins and the CHO-NL4.3 line expressing gp120 and the extracellular domain of gp41.

**Clone:** 115F10.05  
**Specificity:** HIV gp120 and gp160  
**Immunogen:** gp160 (HIVIIIB from Biomérieux), gp120 (BAL from NIH), and CHO-NL4.3 cells  
**Isotype:** IgG1  
**Purification:** QMA Hyper D ion exchange chromatography  
**Formulation/size:** **Purified:** 100 µg in 200 µl / 50 µg in 100 µl Tris-NaCl pH 8  
**Coupled:** 100 µg in 200 µl / 50 µg in 100 µl PBS 50% glycerol

## Available formats:

Reference N°		Format	Application tested
50µg	100µg		
DDX1302P-50	DDX1302P-100	Purified	ELISA gp120, IF
DDX1302B-50	DDX1302B-100	Biotin (on request)	

*Other clones available on request*



*IF staining of CHO-SEC with 115F10.05*

**Usage recommendation:** \*This monoclonal antibody may be used between 5-25µg/ml.  
\*Optimal dilution should be determined by each laboratory for each application.  
\*Coupled antibody: to maintain RT before use.

**Aliquot storage conditions:** -20°C. **KEEP CONTENTS STERILE: no preservative.**  
Purified antibodies: avoid repeated freeze/thaw cycles.  
Coupled antibodies: glycerol protects from freezing.

Not for use in Humans. For research purpose only