

# Monoclonal Anti-human TSLP

## Product reference: DDX0804

### Description

The TSLP (thymic stromal lymphopoietin) is a hemopoietic protein of 159 aa (18 kDa), proposed to signal through a heterodimeric receptor complex composed of TSLP-receptor and IL7R chain. Expressed in many tissues, it prevents apoptosis and stimulates the growth of myeloid cells. It is also detected in the thymus and the tissue cells of the bone marrow. TSLP affects the transition from pre-B cells in B. Alternative splicing of this gene results in two transcripts variants.

(Reche PA et al, *J Immunol.*, 2001, 167(1):336-43 ; Dorshkind. K, *Nature. Immunol.*, 2000 (1):369-370)

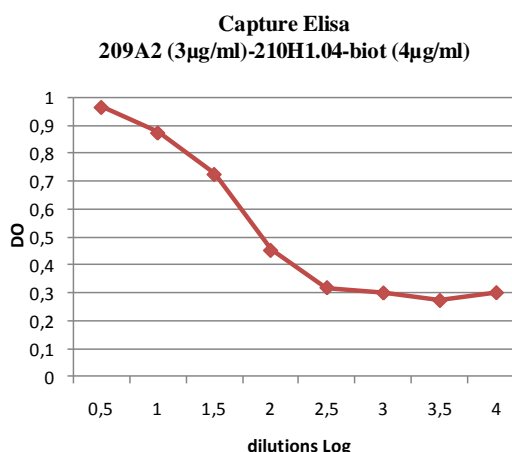
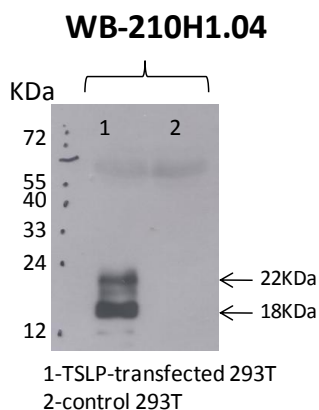
<b>Clone:</b>	210H1
<b>Species:</b>	mouse
<b>Specificity:</b>	human TSLP
<b>Immunogen:</b>	human TSLP-His transfected 293T
<b>Species cross-reactivity:</b>	nd
<b>Isotype:</b>	IgG2a
<b>Purification:</b>	QMA Hyper D ion exchange chromatography
<b>Formulation/size:</b>	<b>Purified:</b> 100 µg in 200 µl / 50 µg in 100µl Tris-NaCl pH 8
	<b>Coupled:</b> 100 µg in 200 µl / 50 µg in 100µl PBS 50% glycerol ( <i>on request</i> )

### Available formats:

Reference N°		Clone	Isotype	Format	Application tested
50 µg	100 µg				
DDX0800P-50	DDX0800P-100	214E4.01	IgG1	Purified	IHC
DDX0801P-50	DDX0801P-100	209A2.03	IgG2a	Purified	IHC, Elisa
DDX0804P-50	DDX0804P-100	210H1	IgG2a	Purified	Elisa, WB
DDX0804B-50 ( <i>on request</i> )	DDX0804B-100 ( <i>on request</i> )			Biotin	Elisa, WB

*Other clones available on request*

**Applications tested:** IHC, WB



*Other clones available on request*

**Usage recommendation:** \*This monoclonal antibody may be used between 1-10 µg/ml.  
\*Optimal dilution should be determined by each laboratory for each application.  
\*Coupled antibody: to maintain RT before use.

**Aliquot storage conditions:** **-20°C. KEEP CONTENTS STERILE: no preservative.**  
**Purified antibodies: avoid repeated freeze/thaw cycles.**  
**Coupled antibodies: glycerol protects from freezing.**

Not for use in Humans. For research purpose only