

Monoclonal Anti-human TSLP

Product reference: DDX0801

Description

The TSLP (thymic stromal lymphopoietin) is a hemopoietic protein of 159 aa (18 kDa), proposed to signal through a heterodimeric receptor complex composed of TSLP-receptor and IL7R α chain. Expressed in many tissues, it prevents apoptosis and stimulates the growth of myeloid cells. It is also detected in the thymus and the tissue cells of the bone marrow. TSLP affects the transition from pre-B cells in B. Alternative splicing of this gene results in two transcripts variants.

(Reche PA et al, *J Immunol.*, 2001, 167(1):336-43 ; Dorshkind. K, *Nature. Immunol.*, 2000 (1):369-370)

Clone:	209A2.03
Species:	mouse
Specificity:	human TSLP
Immunogen:	human TSLP-His transfected 293T
Species cross-reactivity:	nd
Isotype:	IgG2a
Purification:	QMA Hyper D ion exchange chromatography
Formulation/size:	Purified: 100 μ g in 200 μ l / 50 μ g in 100 μ l Tris-NaCl pH 8
	Coupled: 100 μ g in 200 μ l / 50 μ g in 100 μ l PBS 50% glycerol (<i>on request</i>)

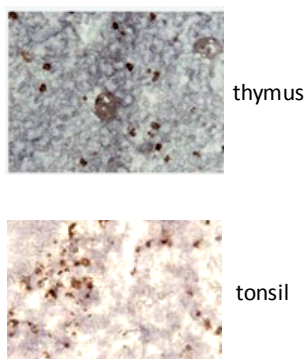
Available formats:

Reference N°		Clone	Isotype	Format	Application tested
50 μ g	100 μ g				
DDX0800P-50	DDX0800P-100	214E4.01	IgG1	Purified	IHC
DDX0801P-50	DDX0801P-100	209A2.03	IgG2a	Purified	IHC, Elisa
DDX0804P-50	DDX0804P-100	210H1	IgG2a	Purified	Elisa, WB
DDX0804B-50 (<i>on request</i>)	DDX0804B-100 (<i>on request</i>)			Biotin	Elisa, WB

Other clones available on request

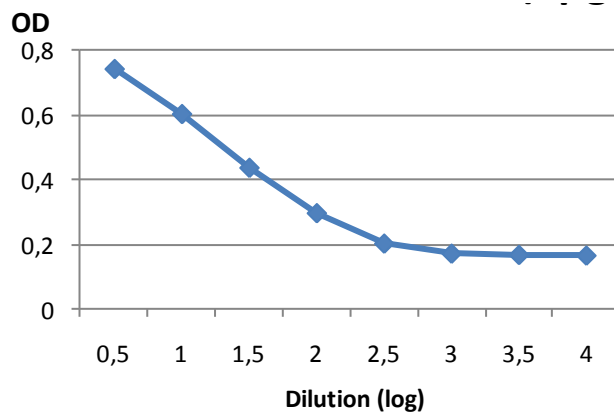
Applications tested: IHC, capture Elisa

IHC-209A2.03



Capture Elisa

209A2.03 (3 μ g/ml) and 210G1-biot (4 μ g/ml)



Usage recommendation:

- *This monoclonal antibody may be used between 1-10 μ g/ml.
- *Optimal dilution should be determined by each laboratory for each application.
- *Coupled antibody: to maintain RT before use.

Aliquot storage conditions:

- 20°C. KEEP CONTENTS STERILE: no preservative.**
- Purified antibodies: avoid repeated freeze/thaw cycles.**
- Coupled antibodies: glycerol protects from freezing.**

Not for use in Humans. For research purpose only