

Monoclonal Anti-human TLR7/CD287

Product reference: DDX0501

Description:

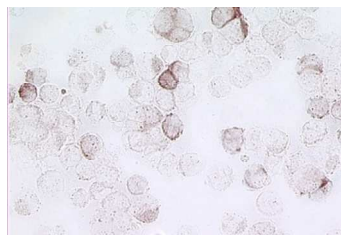
At least twelve members of the Toll family have been identified. TLR7 is expressed on plasmacytoid DCs, B and T lymphocytes, neutrophils, eosinophils, NK cells, and lung and placenta epithelial cells. TLR7 is localized to endosomal/lysosomal compartments and is reported to respond to single-stranded RNA. Plasmacytoid DCs express TLR7 and respond to activation by producing high amounts of IFN- α / β . TLR7 ligands are R848, Imiquimod (Imidazoquinolin family) and loxoribine (guanosin analog). (*Diebold S.S. et al, Science 2004, 303, 1529; Barchet W.A. et al, 2005, Eur J Immunol 3:236; Lund J.M. et al., 2004, PNAS 5598; Hell F. et al., 2004 Science, 303, 1526 ; Gilliet M et al., 2008, Natur Rev Immunol.8, 594*). The 85D6 clone was generated through mouse immunization with human TLR7-transfected eukaryotic cells.

Clone: 85D6
Species: mouse
Specificity: human TLR7
Immunogen: human recombinant TLR7transfected eukaryotic cells
Species cross-reactivity: ND
Isotype: IgG2a
Formulation/size: **Purified:** 100 μ g in 200 μ l / 50 μ g in 100 μ l Tris-NaCl pH 8
Coupled: 100 μ g in 200 μ l / 50 μ g in 100 μ l PBS 50% glycerol

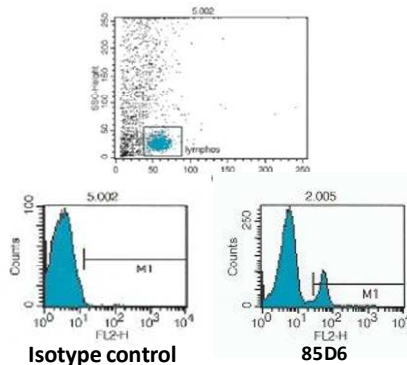
Available formats:

Reference N°		Format	Application tested
50 μ g	100 μ g		
DDX0501P-50	DDX0501P-100	Purified	Intracellular Flow cytometry, IHC
DDX0501A488-50	DDX0501A488-100	Alexa-fluor® 488	Intracellular Flow cytometry, IF
DDX0501A546-50	DDX0501A546-100	Alexa- fluor® 546	Intracellular Flow cytometry, IF
DDX0501A647-50	DDX0501A647-100	Alexa- fluor® 647	Intracellular Flow cytometry, IF
DDX0501B-50	DDX0501B-100	Biotin (<i>on request</i>)	IHC

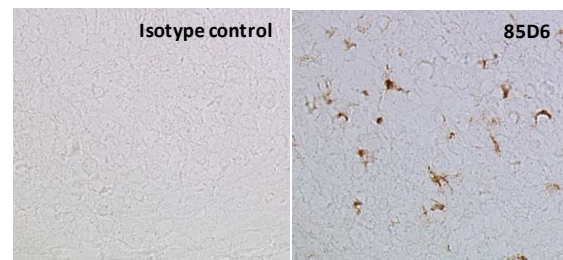
Applications: IHC, intracellular flow cytometry



Staining of huTLR7-transfected 293T cells with 85D6



Intracellular FACS staining of human PBMC with 85D6



IHC staining of human tonsil cryosection (DAB brown)

Usage recommendation:

- *This monoclonal antibody may be used between 5-20 μ g/ml.
- *Optimal dilution should be determined by each laboratory for each application.
- *Coupled antibody: to maintain RT before use.

Aliquot storage conditions:

- 20°C. **KEEP CONTENTS STERILE: no preservative.**
- Purified antibodies: avoid repeated freeze/thaw cycles.**
- Coupled antibodies: glycerol protects from freezing .**

Not for use in Humans. For research purpose only