

Monoclonal Anti-human TLR10/CD290

Product reference: DDX0490

Description:

The Toll-Like Receptors (TLR) is a family of germline-encoded proteins, composed of C-terminal leucine-rich repeats (LRR), and an N-terminal Toll/Interleukin-1 Receptor (TIR) domain (1). In humans, 10 TLRs, sharing high sequence homology, have been identified. TLRs are critical for the detection of pathogen-associated molecular patterns (PAMPs) by the innate immune system. LRR recognize PAMPs, and signal transduction events, initiated by the TIR domain, lead to activation of the transcription factors such as AP-1, IRFs and NFkB, and therefore expression of proinflammatory cytokines and costimulatory molecules. TLR10 mRNA is detected in spleen, tonsils, lymph nodes, bone marrow and PBLs. Human TLR10 is an orphan member of the TLR family. Genomic studies indicate that TLR10 is in a locus that also contains TLR1 and TLR6, two receptors known to function as coreceptors for TLR2. (*Akira, S et al, Nat Rev Immunol, 2004 4:499-511* ; *Flacher V et al, J.Immunol, 2006,177, 959-67* ; *Hasan U et al, J.Immunol, 2005, 174, 2942-50*)

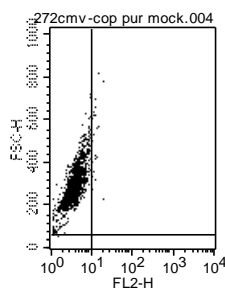
Clone: 25F9
Species: mouse
Specificity: human TLR10
Immunogen: rhTLR10-transfected eukaryotic cells
Species cross- reactivity: nd
Isotype: IgG1
Formulation/size: **Purified:** 100 µg in 200 µl / 50 µg in 100 µl Tris-NaCl pH 8
Coupled: 100 µg in 200 µl / 50 µg in 100 µl PBS 50% glycerol

Available formats:

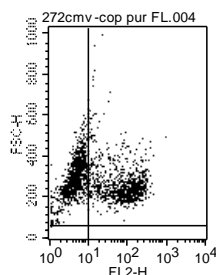
Reference N°		Format	Application tested
50 µg	100 µg		
DDX0490P-50	DDX0490P-100	purified	Flow Cytometry on transfectants, IHC
DDX0490A488-50	DDX0490A488-100	Alexa-fluor@488 (on request)	Flow Cytometry on transfectants, IF
DDX0490A546-50	DDX0490A546-100	Alexa-fluor@546 (on request)	Flow Cytometry on transfectants, IF
DDX0490A647-50	DDX0490A647-100	Alexa-fluor@647 (on request)	Flow Cytometry on transfectants, IF

Applications tested: IHC, Flow cytometry

Intracellular FACS staining with 25F9

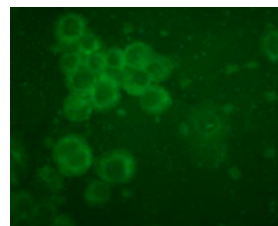


Untransfected COP cells

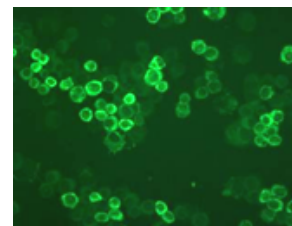


TLR10 transfected COP cells

Immunofluorescence staining with 25F9



Untransfected COP cells



TLR10 transfected COP cells

Usage recommendation: *This monoclonal antibody may be used between 1-10 µg/ml.
 *Optimal dilution should be determined by each laboratory for each application.
 *Coupled antibody: to maintain RT before using.

Aliquot storage conditions: -20°C. **KEEP CONTENTS STERILE: no preservative.**
Purified antibodies: avoid repeated freeze/thaw cycles.
Coupled antibodies: glycerol protects from freezing .

Not for use in Humans. For research purpose only