

Monoclonal Anti-human TLR3/CD283

Product reference: DDX0476 to DDX0478

Description

The Toll-like receptor (TLR) family are considered as key for sensing microbial infections and triggering inflammatory and innate responses. 3 novel mAbs were generated against TLR3 that support the emergence of an alternative model for TLR3 biology: TLR3 full-length (TLR3FL, 130KDa) corresponds to the TLR3 present in ER, which in resting cells is steadily converted within the Golgi into fully glycosylated TLR3 (TLR3FL⁺, 135KDa) and then rapidly cleaved by cathepsins in the endosome/lysosome into 2 long-lived associated fragments (72 KDa and 60KDa). (*Toscano F et al, J. Immunol, 2013, 190: 764–773*).

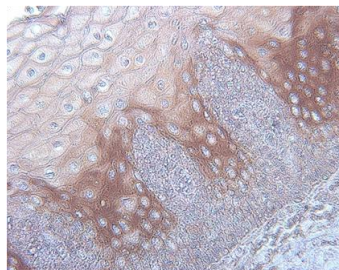
Clones: 1205C5F1 (TLR3.1) ; 1210F1 (TLR3.2) ; 1213F10 (TLR3.3)
Immunogen: HEK-293 stably transfected with huTLR3+rhu TLR3 ECD (R&D)
Specificity: human TLR3
Species: mouse
Purification: QMA Hyper D ion exchange chromatography
Formulation/size: **Purified:** 100 µg in 200µl / 50 µg in 100 µl Tris-NaCl pH 8
Coupled: 100 µg in 200µl / 50 µg in 100 µl PBS 50% glycerol

Available formats:

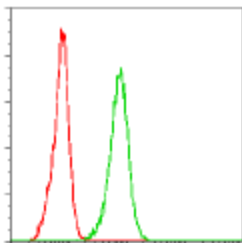
Reference		Format	Clone	Referred to as (Toscano et al 2013)	Isotype	Recognized epitope	Applications tested	Cross reactivity	Band sizes (WB)	rhTLR3	Endogenous TLR3
50µg	100µg										
DDX0476P-50	DDX0476P-100	purified	1213F10	TLR3.3	IgG1	LRR7-LRR8	Intra Flow cytometry, WB, IP, IF	do not recognize mouse TLR3 (WB)	135KDa 130KDa 60KDa	-	+
DDX0476A488-50	DDX0476A488-100	Alexa-488									
DDX0476A546-50	DDX0476A546-100	Alexa-546									
DDX0476A647-50	DDX0476A647-100	Alexa-647	1210F1	TLR3.2	IgG1	LRR20	Intra Flow cytometry, WB, IP, IF	recognizes mouse TLR3 (WB)	135KDa 130KDa 72KDa	+	+
DDX0477P-50	DDX0477P-100	purified									
DDX0477A488-50	DDX0477A488-100	Alexa-488									
DDX0477A546-50	DDX0477A546-100	Alexa-546	1205C5	TLR3.1	IgG1	NT	Intra Flow cytometry, IHC(Bouin Paraffin), IP	NT	NA	-	+
DDX0477A647-50	DDX0477A647-100	Alexa-647									
DDX0478P-50	DDX0478P-100	purified									
DDX0478A488-50	DDX0478A488-100	Alexa-488									
DDX0478A546-50	DDX0478A546-100	Alexa-546									
DDX0478A647-50	DDX0478A647-100	Alexa-647									

Other clones available on request

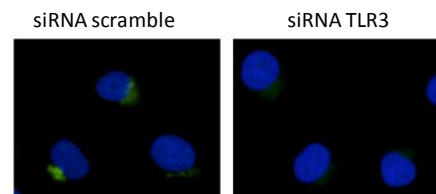
Applications tested :



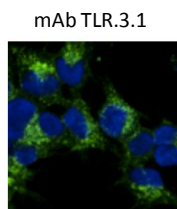
IHC staining of human tonsil (Bouin) With mAb TLR3.1



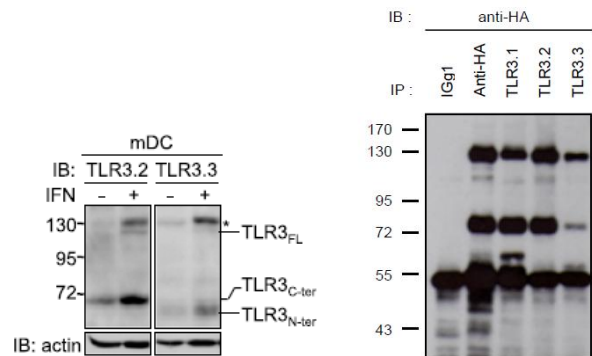
FACS staining of B16F10 cells with mAb TLR3.1



IF staining of endogenous TLR3 with mAb TLR3.1



IF staining of HA-TLR3 HEK transfectants



IFN-treated mono-derived DCs

HA-TLR3-transfected cells lysates (Immunoprecipitation)

Usage recommendation: *This monoclonal antibody may be used between 5-20 µg/ml.
*Optimal dilution should be determined by each laboratory for each application.
*Coupled antibody: to maintain RT before using.

Antibody storage conditions: -20°C. KEEP CONTENTS STERILE: no preservative.

Purified antibodies: avoid repeated freeze/thaw cycles.

Coupled antibodies: glycerol protects from freezing.

Not for use in Humans. For research purpose only