

Monoclonal Anti-human Langerin/CD207

Product reference: DDX0377

Description

Langerin/CD207 is a transmembrane C-type lectin receptor (CLR) of epidermal and mucosal Langerhans cells (LCs) that induces Birbeck granule formation. Langerin features a single carbohydrate recognition domain (CRD) with mannose-type specificity in its extracellular portion. Langerin is unique among the CLRs in that it contains an intracellular domain with a proline-rich motif. Langerin expression has not been reported outside the DC system. (*Valladeau J et al, 2002 J Immunol, 168 : 782-792*) (*Douillard P et al, 2005 J Invest Dermatol, 125: 983-994*)

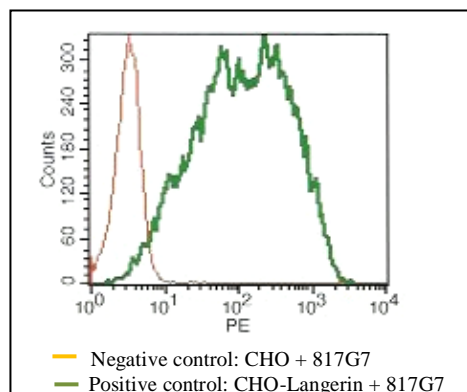
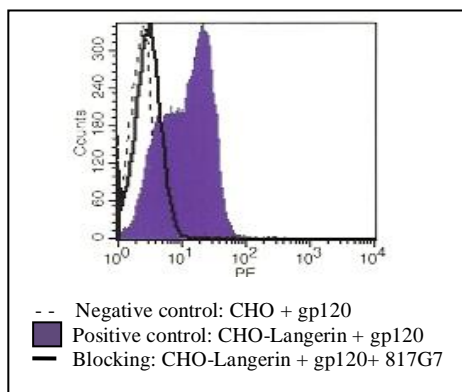
Clone: 817G7
Species: mouse
Specificity: human Langerin (extracellular epitope)
Immunogen: human Langerin-transfected eukaryotic cells
Species cross- reactivity: human
Isotype: IgG1
Purification: QMA Hyper D ion exchange chromatography
Formulation/size: **Purified:** 100 µg in 200µl / 50 µg in 100 µl Tris-NaCl pH 8
Coupled: 100 µg in 200µl / 50 µg in 100 µl PBS 50% glycerol

Available formats:

Reference N°		Format	Application tested
50 µg	100 µg		
DDX0377P-50	DDX0377P-100	Purified	Surface Flow cytometry, blocks HIV-gp120

Other clones available on request

Applications tested: Flow cytometry, gp120 binding blocking



Usage recommendation: *This monoclonal antibody may be used between 5-20 µg/ml
 *Optimal dilution should be determined by each laboratory for each application.

Aliquot storage conditions -20°C. **KEEP CONTENTS STERILE: no preservative.**
Purified antibodies: avoid repeated freeze/thaw cycles.

Not for use in Humans. For research only