

Monoclonal Anti-mouse, human, rat, Langerin/CD207

Product reference: DDX0376

Description

Langerin/CD207 is a transmembrane C-type lectin receptor (CLR) of epidermal and mucosal Langerhans cells (LCs) that induces Birbeck's granule. Langerin features a single carbohydrate recognition domain (CRD) with mannose-type specificity in its extracellular portion. Langerin expression has not been reported outside the DC system. Human Langerin is involved in the processing of mycobacterial glycolipids leading to antigen presentation to CD1a-restricted T cells. Human Langerin binds the gp120 of HIV. (Valladeau *J et al*, 2002 *J. Immunol*, 168 : 782-792; Douillard *P et al*, 2005 *J Invest Dermatol*, 125: 983-994; Chorro *L. et al*, *J Exp.Med.*, 2010, 206 (13), 3089-3100).

Clone: 918A11
Species: rat
Specificity: human Langerin
Immunogen: human Langerin-transfected eukaryotic cells
Species cross-reactivity: human, rat, mouse
Isotype: IgG2a
Purification: QMA Hyper D ion exchange chromatography
Formulation/size: **Purified:** 100 µg in 200µl / 50 µg in 100 µl Tris-NaCl pH 8
Coupled: 100 µg in 200µl / 50 µg in 100 µl PBS 50% glycerol

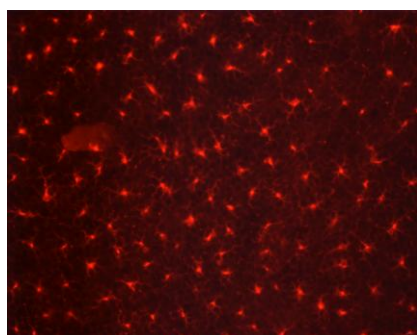
Available formats:

Reference N°		Format	Application tested
50 µg	100 µg		
DDX0376P-50	DDX0376P-100	Purified	IF, IHC, Flow cytometry
DDX0376A488-50	DDX0376A488-100	Alexa-fluor® 488	IF, IHC, Flow cytometry
DDX0376A546-50	DDX0376A546-100	Alexa- fluor® 546	IF, IHC, Flow cytometry
DDX0376A647-50	DDX0376A647-100	Alexa- fluor® 647	IF, IHC, Flow cytometry
DDX0376B-50	DDX0376B-100	Biotin (<i>on request</i>)	IHC, Flow cytometry

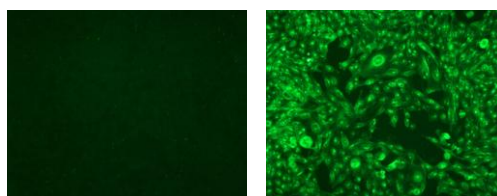
Other clones available on request

Applications: IF, Flow cytometry

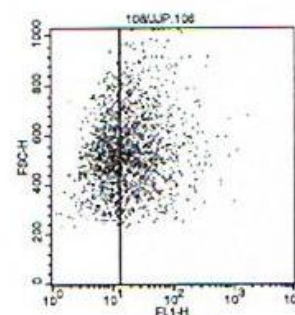
IF staining of mouse epidermal sheet



IF staining of mock (left) and Langerin (right) transfected COP5 cells



Surface FACS staining of Langerin transfected COP5 cells



Usage recommendation: *This monoclonal antibody may be used between 5-20 µg/ml.
*Optimal dilution should be determined by each laboratory for each application.
*Coupled antibody: to maintain RT before use.

Aliquot storage conditions: -20°C. **KEEP CONTENTS STERILE: no preservative.**
Purified antibodies: avoid repeated freeze/thaw cycles.
Coupled antibodies: glycerol protects from freezing.

Not for use in Humans. For research only