

Monoclonal Anti-mouse Langerin/CD207

Product reference: DDX0370

Description

Langerin/CD207 is a transmembrane C-type lectin receptor (CLR) of epidermal and mucosal Langerhans cells (LCs) that induces Birbeck's granule formation. Langerin features a single carbohydrate recognition domain (CRD) with mannose-type specificity in its extracellular portion. Langerin is unique among the CLRs in that it contains an intracellular domain with a proline-rich motif. Langerin expression has not been reported outside the DC system. (*Valladeau J et al, 2002 J Immunol, 168 : 782-792*) (*Douillard P et al, 2005 J Invest Dermatol, 125: 983-994*).

Clone: 205C1
Species: mouse
Specificity: mouse Langerin
Immunogen: mouse ear crawl-out Langerhans cells
Species cross-reactivity: mouse
Isotype: IgM
Source: High-density culture supernatants
Purification: Hyper-D ion exchange chromatography
Formulation/size: **Purified:** 100 µg in 200µl / 50 µg in 100 µl Tris-NaCl pH 8
Coupled: 100 µg in 200µl / 50 µg in 100 µl PBS 50% glycerol

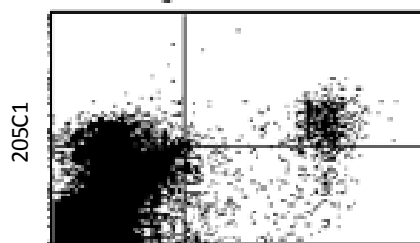
Available formats:

Reference N°		Format	Application tested
50 µg	100 µg		
DDX0370P-50	DDX0370P-100	Purified	Flow cytometry
DDX0370A488-50	DDX0370A488-100	Alexa-fluor®488	Flow cytometry
DDX0370A546-50	DDX0370A546-100	Alexa- fluor®546	IF
DDX0370A647-50	DDX0370A647-100	Alexa- fluor®647 (<i>on request</i>)	Flow cytometry, IF
DDX0370B-50	DDX0370B-100	Biotin (<i>on request</i>)	Flow cytometry

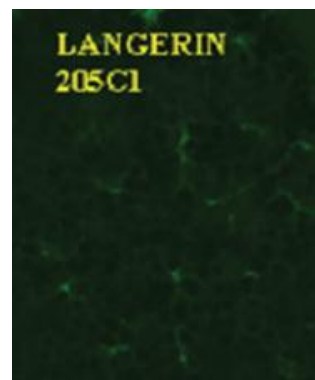
Other clones available on request

Applications tested: FACS, IF (*Douillard P et al, 2005 J Invest Dermatol, 125: 983-994*)

Freshly isolated CD11c⁺ Langerhans cells



MHC class II



IF on acetone-fixed ear epidermal sheet

Usage recommendation: *This monoclonal antibody may be used between 5-20 µg/ml
*Optimal dilution should be determined by each laboratory for each application.
*Coupled antibody: to maintain RT before using.

Aliquot storage conditions: -20°C. **KEEP CONTENTS STERILE: no preservative.**
Purified antibodies: avoid repeated freeze/thaw cycles.
Coupled antibodies: glycerol protects from freezing.

Not for use in Humans. For research only, not for diagnostic or therapeutic use.