



Monoclonal Anti-human Langerin/CD207

1/ DESCRIPTION:

Langerin/CD207 is a transmembrane C-type lectin receptor (CLR) of epidermal and mucosal Langerhans cells (LCs) that induces Birbeck's granule formation. Langerin features a single carbohydrate recognition domain (CRD) with mannose-type specificity in its extracellular portion. Langerin is unique among the CLRs in that it contains an intracellular domain with a proline-rich motif. Langerin expression has not been reported outside the DC system.

Clone: DCGM4/122D5

Species: mouse

Isotype: IgG1

Immunogen: *In vitro*-derived human DCs from CD34⁺ cells in GM-CSF+TNF α

Species cross-reactivity: dog

Specificity: hu Langerin (extracellular epitope in Carbohydrate Recognition domain)

2/ STABILITY-CONSERVATION :

Aliquot storage conditions: -20°C. KEEP CONTENTS STERILE: no preservative.

Purified antibodies: avoid repeated freeze/thaw cycles.

Coupled antibodies: glycerol protects from freezing.

Stable one year upon receipt

3/ AVAILABLE FORMATS:

Reference N°	Format	Application tested
100 μ g		
DDX0363P-100	Purified	Internalization, Flow cytometry, IHC
DDX0363A488-100	Alexa-fluor® 488	Flow cytometry, IF
DDX0363A546-100	Alexa- fluor® 546	IF
DDX0363A647-100	Alexa- fluor® 647	Flow cytometry
DDX0363B-100	Biotin (<i>on request</i>)	Western-Blot

4/ USAGE RECOMMENDATION

This antibody may be used between 5-20 μ g/ml.

Optimal dilution should be determined by each laboratory for each application.

Coupled antibody: to maintain room temperature before use

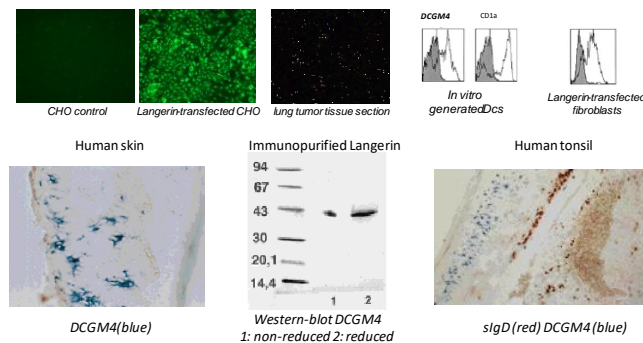
For R&D use only

5/ MATERIALS AND METHODS

Purification: QMA Hyper D ion exchange chromatography

Purified in Tris-NaCl pH8 and adjusted at 0.5mg/ml in PBS+ antibiotics

Coupled: 0.5mg/ml in PBS 50%glycerol+ antibiotics



6/ BIBLIOGRAPHY :

<http://www.dendritics.net/products/detail/ddx0363-dcgm4122d5>