

Monoclonal Anti-human, canine Langerin/CD207

Product reference: DDX0363

Description

Langerin/CD207 is a transmembrane C-type lectin receptor (CLR) of epidermal and mucosal Langerhans cells (LCs) that induces Birbeck's granule formation. Langerin features a single carbohydrate recognition domain (CRD) with mannose-type specificity in its extracellular portion. Langerin is unique among the CLRs in that it contains an intracellular domain with a proline-rich motif. Langerin expression has not been reported outside the DC system. (Valladeau J et al, 1999, *Eur.J.Immunol.*, 29:2695-2704; Valladeau J et al, 2000 *Immunity*, 12 : 71-81; Kashihara M et al, 1986, *J.Invest.Derm.*, 87 :602-607 ; Ito T et al, 1999, *J.Immunol.*, 163 :1409-1419 ;Saeland S & Valladeau J, *CD207 (Langerin) Workshop reports 2002, Leukocyte-Typing VII, White Cell Diff Antigens, D. Mason et al, Eds, Oxford University Press:306-307*)

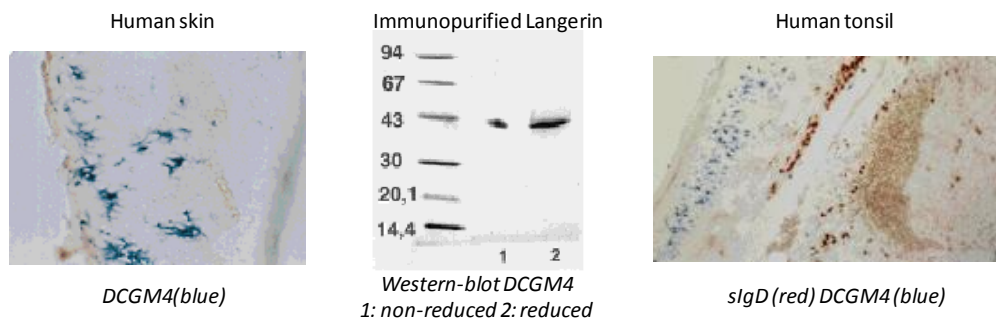
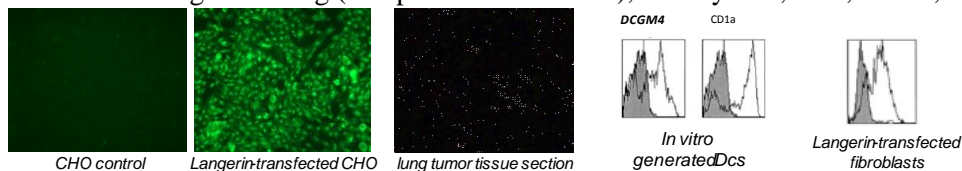
Clone: DCGM4/122D5
Species: mouse
Specificity: human Langerin (extracellular epitope in Carbohydrate Recognition domain)
Immunogen: *In vitro*-derived human DCs from CD34⁺ cells in GM-CSF+TNF α
Species cross- reactivity: human, dog
Isotype: IgG1
Purification: QMA Hyper D ion exchange chromatography
Formulation/size: **Purified:** 100 μ g in 200 μ l / 50 μ g in 100 μ l Tris-NaCl pH 8
Coupled: 100 μ g in 200 μ l / 50 μ g in 100 μ l PBS 50% glycerol

Available formats:

Reference N°		Format	Application tested
50 μ g	100 μ g		
DDX0363P-50	DDX0363P-100	Purified	Internalization, Flow cytometry, IHC
DDX0363A488-50	DDX0363A488-100	Alexa-fluor®488	Flow cytometry, IF
DDX0363A546-50	DDX0363A546-100	Alexa- fluor®546	IF
DDX0363A647-50	DDX0363A647-100	Alexa- fluor®647	Flow cytometry
DDX0363B-50	DDX0363B-100	Biotin	Western blot

VH and VL regions of this antibody were sequenced ; other clones available on request

Applications tested: Antigen binding (competes with mannan), endocytosis, IHC, FACS, WB



Valladeau J et al, 1999, *Eur.J.Immunol*

Usage recommendation: *This monoclonal antibody may be used between 5-20 μ g/ml
 *Optimal dilution should be determined y each laboratory for each application

*Coupled antibody: to maintain RT before using
Aliquot storage conditions: -20°C. **KEEP CONTENTS STERILE: no preservative.**
Purified antibodies: avoid repeated freeze/thaw cycles.
Coupled antibodies: glycerol protects from freezing .

Not for use in Humans. For research only