

Monoclonal Anti-human LAL (Langerin-associated-lectin)

DDX0351

Description:

A newly-identified human endothelial cell homolog of the mouse Kupffer-cell receptor (Clec4E, member of C-type lectins) has been cloned from DNA sequence of human langerin. Antibodies against this newly-identified human receptor have been generated and named LAL for Langerin-associated Lectin. These antibodies stain skin, lung and tonsil endothelial cells (*unpublished observations*).

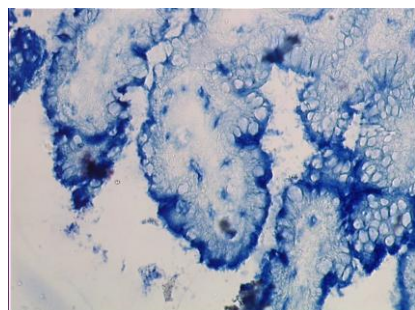
Clones: 117E10.10
Species / Isotype: mouse /IgG1
Specificity: human Langerin associated lectin (LAL)
Immunogen: recombinant human LAL (entire molecule)
Species cross- reactivity: not tested
Formulation/size: **Purified:** 100 µg in 200µl / 50 µg in 100 µl Tris-NaCl pH 8
Coupled: 100 µg in 200 µl / 50 µg in 100 µl PBS 50% glycerol

Available formats:

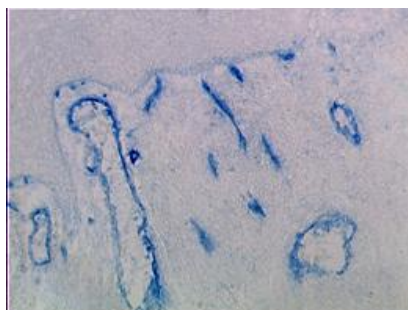
Reference N°		Format	Application tested
50 µg	100 µg		
DDX0351P-50	DDX0351P-100	purified	Surface Flow Cytometry, IHC
DDX0351A488-50	DDX0351A488-100	Alexa@488	Surface Flow Cytometry, IHC
DDX0351A546-50	DDX0351A546-100	Alexa@546	Surface Flow Cytometry, IHC
DDX0351A647-50	DDX0351A647-100	Alexa@647	Surface Flow Cytometry, IHC

Applications tested: IHC

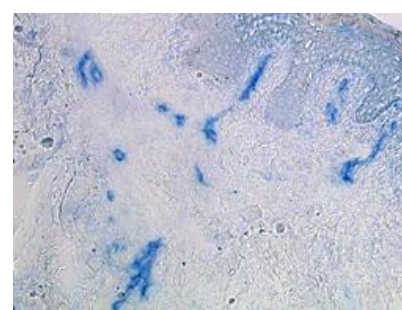
Frozen human tissue sections stained with 117E10



Gut



Tonsil



Skin

Usage recommendation: *This monoclonal antibody may be used between 1-10 µg/ml
*Optimal dilution should be determined by each laboratory for each application
*Coupled antibody: to maintain RT before using

Aliquot storage conditions -20°C. **KEEP CONTENTS STERILE: no preservative.**
Purified antibodies: avoid repeated freeze/thaw cycles.
Coupled antibodies: glycerol protects from freezing

Not for use in Humans. For research purpose only

contact@dendritics.net

+33(0)4.72.71.74.03

www.dendritics.net