

# Monoclonal Anti-human LAL (Langerin-associated-lectin)

**Product reference: DDX0350**

## Description:

A newly-identified human endothelial cell homolog of the mouse Kupffer-cell receptor (Clec4E, member of C-type lectins) has been cloned from DNA sequence of human langerin. Antibodies against this newly-identified human receptor have been generated and named LAL for Langerin-associated Lectin. These antibodies stain skin, lung and tonsil endothelial cells (*unpublished observations*).

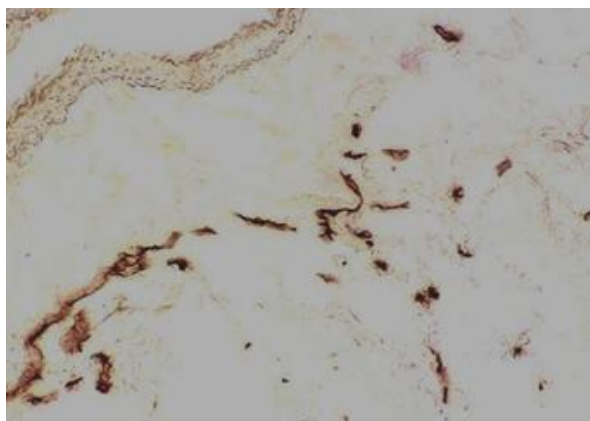
**Clones:** 109B8.02  
**Species / Isotype:** mouse /IgG1  
**Specificity:** human Langerin associated lectin (LAL)  
**Immunogen:** recombinant human LAL (entire molecule)  
**Species cross- reactivity:** no  
**Formulation/size:** **Purified:** 100 µg in 200µl / 50 µg in 100 µl Tris-NaCl pH 8  
**Coupled:** 100 µg in 200 µl / 50 µg in 100 µl PBS 50% glycerol

## Available formats:

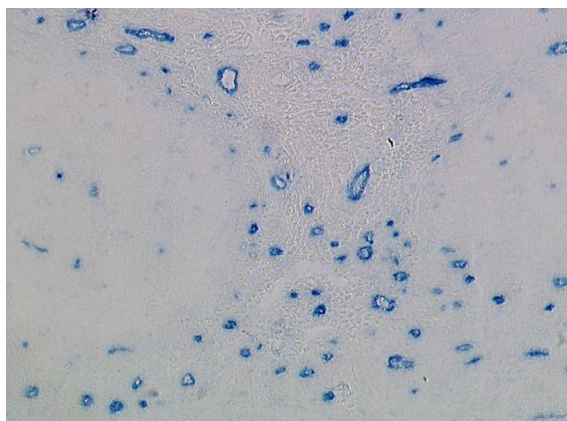
Reference N°		Format	Application tested
50 µg	100 µg		
DDX0350P-50	DDX0350P-100	purified	Surface Flow Cytometry, IP, IHC, WB
DDX0350A488-50	DDX0350A488-100	Alexa@488	Surface Flow cytometry, IF
DDX0350A546-50	DDX0350A546-100	Alexa@546	Surface Flow cytometry, IF
DDX0350A647-50	DDX0350A647-100	Alexa@647	Surface Flow cytometry, IF

## Applications tested: IHC

*Human lung frozen section  
stained with 109B8.02 (HRP)*



*Human tonsil frozen section  
stained with 109B8.02-(Fast-Blue)*



**Usage recommendation:** \*This monoclonal antibody may be used between 1-10 µg/ml  
\*Optimal dilution should be determined by each laboratory for each application  
\*Coupled antibody: to maintain RT before using

**Aliquot storage conditions** -20°C. **KEEP CONTENTS STERILE: no preservative.**  
**Purified antibodies:** avoid repeated freeze/thaw cycles.  
**Coupled antibodies:** glycerol protects from freezing

**Not for use in Humans. For research purpose only**

contact@dendritics.net

**+33(0)4.72.71.74.03**

www.dendritics.net