

# Human monoclonal antibody against Derp 1

## Product reference: DDX0211-DDX0212-DDX0213

### Description

House-dust mite allergy belongs to the most common allergies worldwide which affect more than 50% of all allergic patients. House dust mite allergens play an important role in inducing IgE-mediated sensitization and the development of bronchial hyperresponsiveness and asthma, perennial rhinitis, and atopic dermatitis. Allergic patients's sera (IgE) recognize the house-dust mite *Dermatophagoides Pteronyssinus* Derp 1. The key event in these reactions is the cross-linking of IgE antibodies on effector cells by allergens, which induces a release of biologically active mediators like histamine and leukotrienes leading to different symptoms of allergy. Studies in vivo have shown that the cysteine peptidase activity of group 1 house dust mite allergens contributes to their allergenicity.

(Chapman MD, 1980; *J. Immunol.*, 125: 587-592; Hales BJ, Thomas WR., 1997; *Clin. Exp. Allergy*, 27(8):868- 875; Doull IJ. et al, 1997; *Allergy*, 52,220; Custovic A, 1996; *J. Allergy Clin. Immunol.*, 98: 64-72; Szalai K. et al., 2008; *Mol. Immunol.* 45:5, 1308-17)

### Specificity:

Derp 1 (allergen of *Dermatophagoides pteronyssinus*)

### Source:

EBV-immortalized clones derived from PBMC of patients allergic to DPT negative on Derf1- Bet v1.

### Cross-reactivity:

### Purification:

QMA Hyper D ion exchange chromatography

### Formulation/size:

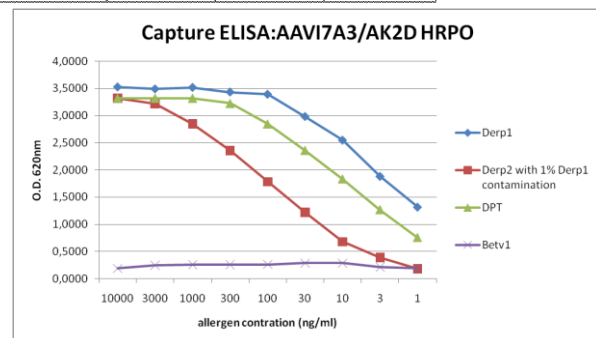
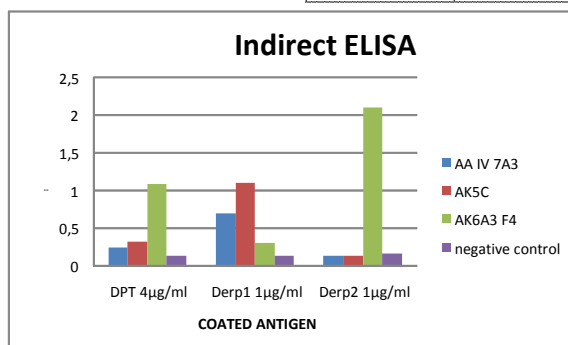
**Purified:** 100 µg in 200 µl / 50 µg in 100 µl Tris-NaCl pH 8

**Coupled:** 100 µg in 200 µl / 50 µg in 100 µl PBS 50% glycerol (available

on request)

### Available formats:

Reference N°		Clone	Isotype	Format	Application tested
50 µg	100 µg				
DDX0211P-50	DDX0211P-100	H.AA.IV7A3	IgG1, k	Purified	ELISA, IF
DDX0211HRPO-50	DDX0211HRPO-100			HRPO	ELISA
DDX0211B-50	DDX0211B-100			Biotin	ELISA
DDX0212P-50	DDX0212P-100	H.AK5.C	IgG1, k	Purified	ELISA, IF
DDX0212HRPO-50	DDX0212HRPO-100			HRPO	ELISA
DDX0212B-50	DDX0212B-100			Biotin	ELISA
DDX0213P-50	DDX0213P-100	H.AK2D	IgG1, k	Purified	ELISA, IF
DDX0213HRPO-50	DDX0213HRPO-100			HRPO	ELISA
DDX0213B-50	DDX0213B-100			Biotin	ELISA



Human monoclonal antibodies were tested in ELISA to detect *Dermatophagoides Pteronyssinus* from different sources: crude extract (DPT) recombinant protein (Derp1) or purified protein (Derp2). Betv1 the birch pollen allergen was used as a negative control.

### Usage recommendation:

- \*This monoclonal antibody may be used between 1-20 µg/ml.
- \*Optimal dilution should be determined by each laboratory for each application.
- \*Coupled antibody: to maintain RT before use.

### Aliquot storage conditions

- 20°C. KEEP CONTENTS STERILE: no preservative.**
- Purified antibodies: avoid repeated freeze/thaw cycles.**
- Coupled antibodies: glycerol protects from freezing.**

Not for use in Humans. For research purpose only