

Monoclonal Anti-human DC-SIGN/CD209

Product reference: DDX0209

Description

DC-SIGN (“**DC Specific, ICAM-3 Grabbing, Nonintegrin**”)/CD209 and liver/lymph node-specific ICAM-3-grabbing nonintegrin (L-SIGN) (CD299/DC-SIGNR for DC-SIGN-related molecule; DC-SIGN2) are closely related genes that map to chromosome 19p13.3. Both genes encode a member of the C-type lectin family of type II transmembrane proteins. The two receptors are 77% identical at the amino acid level, have similar ligands. They are expressed in different tissues. Both receptors have been shown to interact with ICAM-3-DC-SIGN is a high affinity receptor for HIV gp120 (Soilleux E.J. 2003, *Clinical Science* 104, 437-; Dakappagari N., et al. 2006, *The J Immunol*, 176, 426; Geijtenbeek T.B., et al. 2000, *Cell*, 100, 57 ; .Bashirova A. et al., 2001, *J.Exp. Med.*, 193, 671). The clone 111H2.02 anti-DC-SIGN blocks HIVgp120-DC-SIGN interaction and reacts on formalin-fixed tissues (Canard B et al, *Immunol Lett.* 2011, 135(1-2):165-72)

Clone: 111H2.02
Species: mouse
Specificity: human DC-SIGN
Immunogen: HeLa cells stably transfected-with human DC-SIGN
Species cross- reactivity: positive staining on NIH3T3-transfected LSIGN
Isotype: IgG2b
Formulation/size: **Purified:** 100 µg in 200µl Tris-NaCl pH 8
Coupled: 100 µg in 200µl PBS 50% glycerol

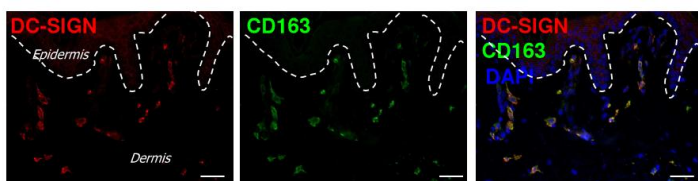
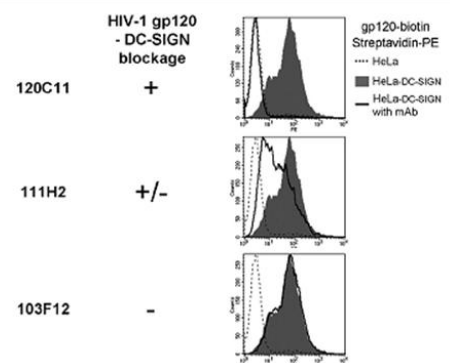
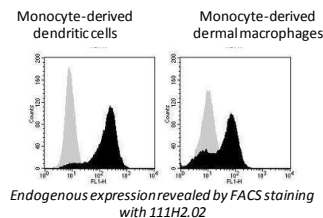
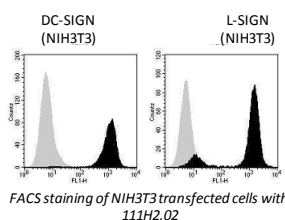
Available formats:

| Reference N° | | Format | Application tested |
|----------------|-----------------|------------------------------|--|
| 50 µg | 100 µg | | |
| DDX0209P-50 | DDX0209P-100 | purified | Surface flow cytometry, IHC Formol- paraffin, Bouin paraffin, Histowax |
| DDX0209A488-50 | DDX0209A488-100 | Alexa-fluor@488 | Surface Flow cytometry |
| DDX0209A546-50 | DDX0209A546-100 | Alexa- fluor@546 | IF |
| DDX0209A647-50 | DDX0209A647-100 | Alexa- fluor@647 | surface Flow cytometry |
| DDX0209B-50 | DDX0209B-100 | Biotin (<i>on request</i>) | Surface Flow cytometry, IHC |

Other clones available on request

Applications tested

flow cytometry, formol- paraffin IHC, HIVgp120-DC-SIGN blocking



Usage recommendation:

- *This monoclonal antibody may be used between 5-20 µg/ml
- *Optimal dilution should be determined by each laboratory for each application
- *Coupled antibody: to maintain RT before using

Aliquot storage conditions

- 20°C. **KEEP CONTENTS STERILE: no preservative.**
- Purified antibodies: avoid repeated freeze/thaw cycles.**
- Coupled antibodies: glycerol protects from freezing.**

Not for use in Humans. For research purpose only