

# Monoclonal Anti-human, murine DC-SIGN/CD209

**Product reference: DDX0207**

## Description

DC-SIGN (“**DC Specific, ICAM-3 Grabbing, Nonintegrin**”)/CD209 and liver/lymph node-specific ICAM-3-grabbing nonintegrin (L-SIGN) (CD299/DC-SIGNR for DC-SIGN-related molecule; DC-SIGN2) are closely related genes that map to chromosome 19p13.3. Both genes encode a member of the C-type lectin family of type II transmembrane proteins. The two receptors are 77% identical at the amino acid level, have similar ligands. They are expressed in different tissues. Both receptors have been shown to interact with ICAM-3-DC-SIGN is a high affinity receptor for HIV gp120 (*Soilleux E.J. 2003, Clinical Science 104, 437-; Dakappagari N., et al. 2006, The J Immunol, 176, 426; Geijtenbeek T.B., et al. 2000, Cell, 100, 57 ; .Bashirova A. et al., 2001, J.Exp. Med., 193, 671 ; Canard B et al, Immunol Lett. 2011, 135(1-2):165-72 ; Rochereau N. et al, Vaccine 2011; Kwan WH et al, PLoS Negl.Trop.Dis, 2:e311, 2008).*

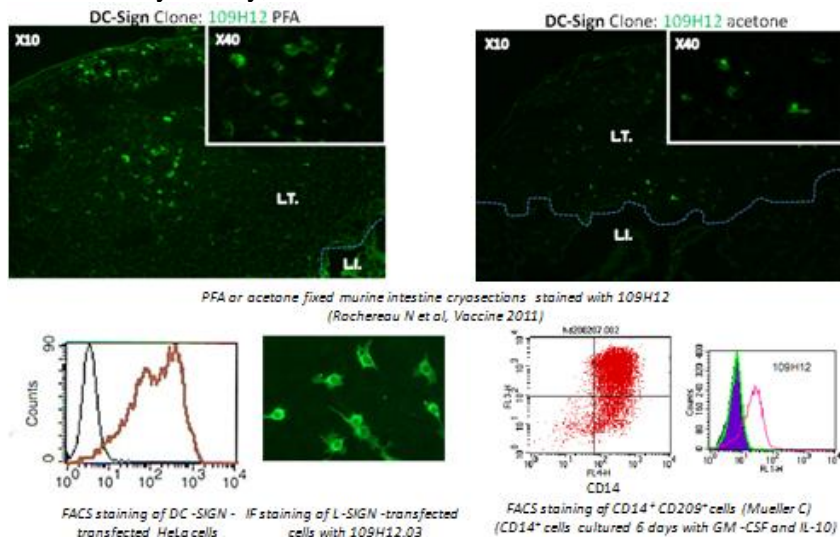
**Clone:** 109H12.03  
**Species:** mouse  
**Specificity:** human DC-SIGN  
**Immunogen:** human DC-SIGN-transfected HeLa cells  
**Species cross- reactivity:** L-SIGN, mouse DC-SIGN  
**Isotype:** IgG2a  
**Formulation/size:** **Purified:** 100 µg in 200µl / 50 µg in 100 µl Tris-NaCl pH 8  
**Coupled:** 100 µg in 200µl / 50 µg in 100 µl PBS 50% glycerol

## Available formats:

Reference N°		Format	Application tested
50 µg	100 µg		
DDX0207P-50	DDX0207P-100	purified	Surface flow cytometry, IHC, IF
DDX0207A488-50	DDX0207A488-100	Alexa-fluor@488	Surface flow cytometry, IHC, IF
DDX0207A546-50	DDX0207A546-100	Alexa- fluor@546	Surface flow cytometry, IHC, IF
DDX0207A647-50	DDX0207A647-100	Alexa- fluor@647	Surface flow cytometry, IHC, IF
DDX0207B-50	DDX0207B-100	Biotin ( <i>on request</i> )	Surface flow cytometry, IHC, IF

## Other clones available on request

**Applications tested:** flow cytometry, IF



**Usage recommendation:**

- \*This monoclonal antibody may be used between 5-20 µg/ml
- \*Optimal dilution should be determined by each laboratory for each application
- \*Coupled antibody: to maintain RT before using

**Aliquot storage conditions** -20°C. **KEEP CONTENTS STERILE: no preservative.**  
**Purified antibodies:** avoid repeated freeze/thaw cycles.  
**Coupled antibodies:** glycerol protects from freezing.

Not for use in Humans. For research purpose only