

# Monoclonal Anti-human CD21 long isoform (CD21L)

**Product reference: DDX0120**

## Description

An antibody has been generated that specifically recognizes human follicular dendritic cells (FDCs) on the long CR2 / CD21L isoform (CD21L). Follicular dendritic cells represent a cell-type ontogenetically distinct from all other Dendritic Cells (DCs). They are found within B lymphocyte follicles of secondary lymphoid tissue. At the opposite, B lymphocytes selectively express the short CR2 / CD21 lacking exon 10a (CD21S). mAb 7D6 does not recognize CD21 expressed on other cells.

(Liu Y.J. et al, 1997; J. Exp. Med.185: 165-170)

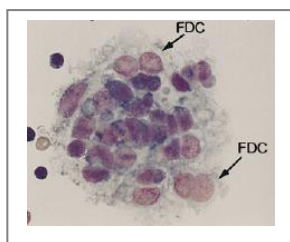
<b>Clone:</b>	<b>7D6</b>
<b>Species:</b>	mouse
<b>Specificity:</b>	human follicular dendritic cells
<b>Immunogen:</b>	enriched-human tonsillar FDCs (follicular dendritic cells)
<b>Species cross- reactivity:</b>	nd
<b>Isotype:</b>	IgG1
<b>Purification:</b>	QMA Hyper D ion exchange chromatography
<b>Formulation/size:</b>	<b>Purified:</b> 100 µg in 200 µl / 50 µg in 100 µl Tris-NaCl pH 8
	<b>Coupled:</b> 100 µg in 200 µl / 50 µg in 100 µl PBS 50% glycerol

## Available formats:

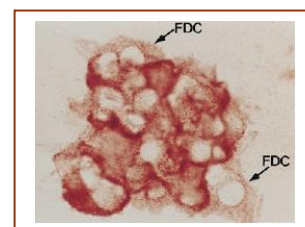
Reference		Format	Application tested
50µg	100µg		
DDX0120P-50	DDX0120P-100	purified	IHC frozen section

## Applications tested:

IHC.



*Giemsa staining of isolated FDCs clusters.*



*mAb 7D6 staining on FDC clusters. Slides were incubated with mAb 7D6 and subsequently with a sheep anti-mouse IgG1. The binding of antibody was revealed using APAAP method and developed by Fast red substrate.*

## Usage recommendation:

- \*This monoclonal antibody may be used between 1-15 µg/ml.
- \*Optimal dilution should be determined by each laboratory for each application.
- \*Coupled antibody: to maintain RT before use.

## Aliquot storage conditions:

- 20°C. KEEP CONTENTS STERILE: no preservative.**
- Purified antibodies: avoid repeated freeze/thaw cycles.**
- Coupled antibodies: glycerol protects from freezing.**

**Not for use in Humans. For research purpose only**