

Monoclonal Anti-human MIP-3 α /CCL20

Product reference: DDX0420

Description:

Macrophage inflammatory protein (MIP)-3 α / CCL20 is a CC-type chemokine mapped to chromosome 2 in humans. Langerhans cells (LCs) represent a unique population of DCs colonizing epithelium. MIP-3 α plays a central role in LC precursor recruitment into the epithelium during inflammation. (a) Among DC populations, MIP-3 α is the most potent chemokine inducing the selective migration of in vitro-generated CD34(+) hematopoietic progenitor cell-derived LC precursors and skin LCs in accordance with the restricted MIP-3 α receptor (CC chemokine receptor 6) expression by these cells. (b) MIP-3 α is mainly produced by epithelial cells, and the migration of LC precursors induced by the supernatant of activated skin keratinocytes is blocked with an antibody against MIP-3 α . (c) In vivo, MIP-3 α is selectively produced at sites of inflammation as illustrated in tonsils and lesional psoriatic skin where MIP-3 α upregulation appear associated with an increase in LC turnover. (d) The secretion of MIP-3 α is strongly upregulated by cells of epithelial origin after inflammatory stimuli (interleukin 1 β plus tumor necrosis factor α) or T cell signals. (*Dieu-Nosjean et al, J;Exp.med, 2000 192: 705-18;Homey B. et al, 2000,J.Immunol.164:6621-32*)

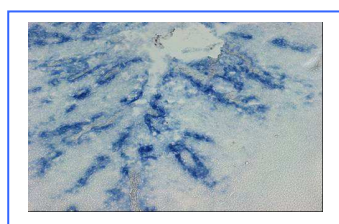
Clone: 206D9.05
Species / Isotype: mouse, IgG1
Specificity: human MIP-3 α
Immunogen: human recombinant MIP3 α in eukaryotic cells
Species cross- reactivity: n,d
Purification: QMA Hyper D ion exchange chromatography
Formulation/size: **Purified:** 100 μ g in 200 μ l Tris-NaCl pH 8
Coupled: 100 μ g in 200 μ l PBS 50% glycerol

Available formats:

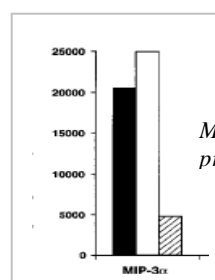
Reference	Format	Application tested
DDX0420	purified	Blocking migration, WB, paraffin (Bouin), IHC frozen section
DDX0420HRPO	HRPO	ELISA detection

Applications tested

This monoclonal antibody has been tested in ELISA and runs with clone 319F6.06



Human tonsil cryosection



Migration blocking of CD1a+LC precursors with clone 206D9.05

Usage recommendation:

- *This monoclonal antibody may be used between 5-20 μ g/ml
- *Optimal dilution should be determined by each laboratory for each application
- *Coupled antibody: to maintain RT before using

Aliquot storage conditions

-20°C. KEEP CONTENTS STERILE: no preservative. Purified antibodies: avoid repeated freeze/thaw cycles. Coupled antibodies: glycerol protects from freezing.

Not for use in Humans. For research purpose only