

Monoclonal Anti-human ASPGR/CD301

Product reference: DDX0010

Description:

ASGPR/MGL (asialoglycoprotein / macrophage galactose lectin receptor) / CD301 is a Ca(2+)-dependent type II transmembrane lectin. Immunoprecipitation from DCs using anti-DC-ASGPR mAb yields a major 40-kDa protein. ASGPR mRNA is observed predominantly in immune tissues (DCs and granulocytes), but not in T, B, or NK cells, or monocytes. ASGPR species are restricted to the CD14-derived DCs obtained from CD34(+) progenitors, while absent from the CD1a-derived subset. Accordingly, both monocyte-derived DCs and tonsillar interstitial-type DCs express ASGPR protein, while Langerhans-type cells do not. ASGPR is a feature of immaturity, as expression is lost upon CD40L activation. In agreement with the presence of tyrosine-based and dileucine motifs in the intracytoplasmic domain, mAb against DC-ASGPR is rapidly internalized by DCs at 37 degrees C. Finally, intracellular ASGPR is localized in early endosomes, suggesting that the receptor recycles to the cell surface following internalization of ligand. ASGPR/HML is a feature of immature DCs and a subtype of macrophages, and likely important for the specialized antigen-capture function of DCs. (*Valladeau J et al, 2001 J. Immunol., 167: 5767*)

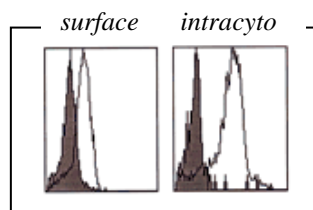
Clone: 125A10.03
Species / Isotype: mouse, IgG1
Specificity: human ASGPR/MGL
Immunogen: human ASGPR Ig fusion protein
Species cross- reactivity: nd
Purification: QMA Hyper-D Ion-exchange chromatography
Formulation/size: **Purified:** 100 µg in 200µl Tris-NaCl pH 8
Coupled: 100 µg in 200µl PBS 50% glycerol

Available formats:

Reference	Format	Application tested
DDX0010	Purified	IHC, IP
DDX0010A488	Alexa-fluor® 488	Flow cytometry, IF
DDX0010A546	Alexa- fluor® 546	IF
DDX0010A647	Alexa- fluor® 647	Flow cytometry
DDX0010B	Biotin	Flow cytometry, IHC, IP

Applications tested

This monoclonal antibody has been tested in Flow cytometry, IHC on cryosection, antigen-capture endocytosis



FACS with 125A10.03+goat antimouse FITC on Monocyte - derived DCs (GMCSF+IL4)

Usage recommendation: *This monoclonal antibody may be used between 5-20 µg/ml
 *Optimal dilution should be determined by each laboratory for each application
 *Coupled antibody: to maintain RT before using

Aliquot storage conditions -20°C. **KEEP CONTENTS STERILE: no preservative. Purified antibodies: avoid repeated freeze/thaw cycles. Coupled antibodies: glycerol protects from freezing.**

Not for use in Humans. For research purpose only