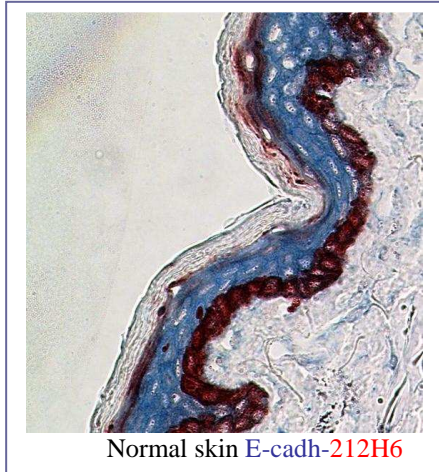
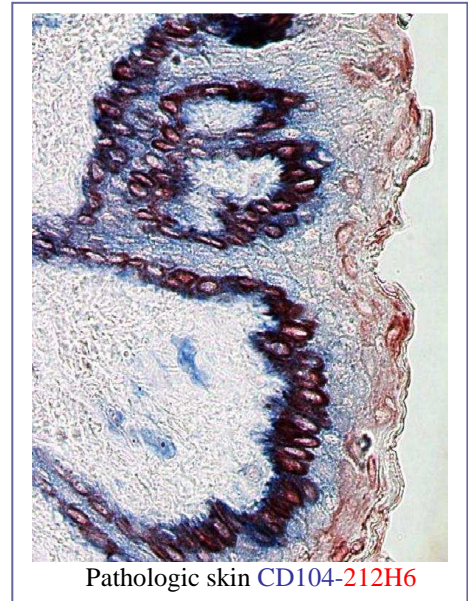


Basophil and mast cells in steady and pathologic states (with Nathalie Bendriss-Vermare courtesy)

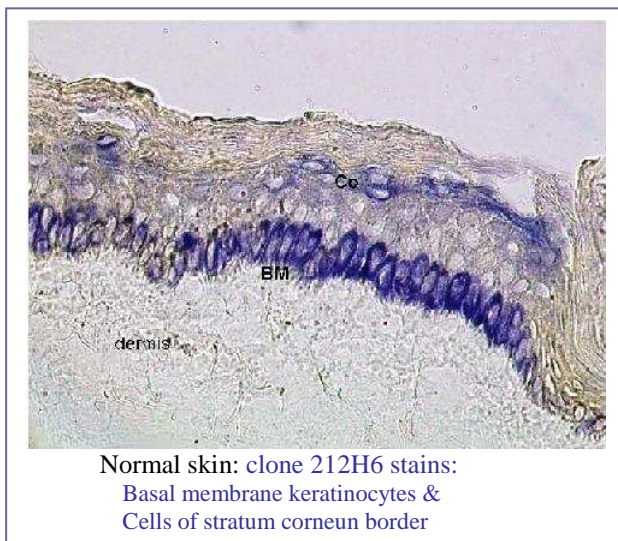
IHC on human skin acetone-fixed section using clone 212H6 (DDX0030) and biotinylated sheep anti-mouse IgM (the Binding site) followed by streptavidin-alkaline phosphatase (Biosource). Streptavidin-alkaline phosphatase activity was demonstrated using the fast blue substrate. Double staining was done with anti-integrin $\beta 4$ (CD104) or E-cadherin



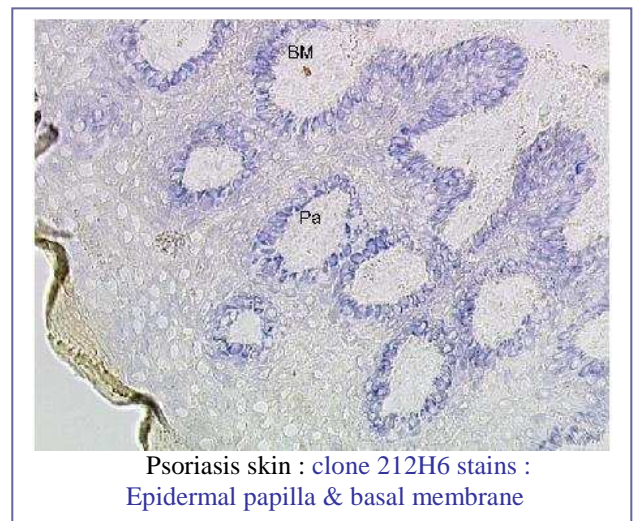
Normal skin E-cadh-212H6



Pathologic skin CD104-212H6



Normal skin: clone 212H6 stains:
Basal membrane keratinocytes &
Cells of stratum corneum border



Psoriasis skin : clone 212H6 stains :
Epidermal papilla & basal membrane

Not for use in Humans. For research purpose only