

Monoclonal Anti-human, canine Myd88

Product reference: DDX1400-1401

Description

MyD88 (myeloid differentiation primary response gene 88) is a universal adapter protein of 296 aa used by all TLRs (except TLR3) and by IL1-R to activate the transcription factor NF- κ B. Myd88 binds IRAK1, IRAK2 and TRAF6, leading to NF- κ B activation, cytokine secretion and inflammatory response. Myd88 increases IL8 transcription, and is involved in IL18 signaling pathway. A monoclonal antibody was raised against huMyd88-transfected 293T cells. This antibody specifically recognizes endogenously expressed Myd88 and does not cross-react with the mouse Myd88. Both 603E10.05 and 603E10.06 monoclonal antibodies were validated both in human and in dog.

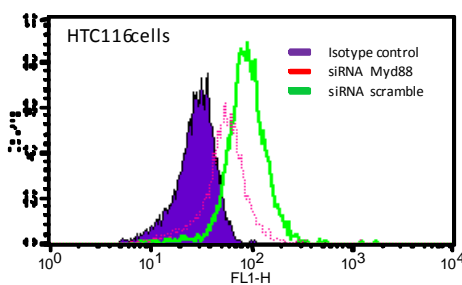
Clones:	603E10.05 and 603E10.06
Species:	mouse
Specificity:	human Myd88
Immunogen:	huMyd88 transfected 293T cells
Species cross-reactivity:	negative for murine Myd88
Isotype:	IgG2b (603E10.05), IgG1 (603E10.06)
Purification:	QMA Hyper D ion exchange chromatography
Formulation/size:	Purified: 100 μ g in 200 μ l /50 μ g in 100 μ l Tris-NaCl pH 8 Coupled: 100 μ g in 200 μ l /50 μ g in 100 μ l PBS 50% glycerol

Available format

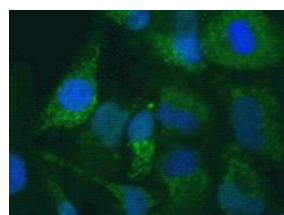
Reference		Clone	Format	Application tested
50 μ g	100 μ g			
DDX1400P-50	DDX1400P-100	603E10.05	Purified	Intracyto flow cytometry
DDX1400A488-50	DDX1400A488-100	603E10.05	Alexa-fluor@488	Intracyto flow cytometry
DDX1400A546-50	DDX1400A546-100	603E10.05	Alexa-fluor@546	Intracyto flow cytometry
DDX1400A647-50	DDX1400A647100	603E10.05	Alexa-fluor@647	Intracyto flow cytometry
DDX1401P-50	DDX1401P-100	603E10.06	Purified	IF, Intracyto flow cytometry
DDX1401A488-50	DDX1401A488-100	603E10.06	Alexa-fluor@488	Intracyto flow cytometry
DDX1401A546-50	DDX1401A546-100	603E10.06	Alexa-fluor@546	Intracyto flow cytometry
DDX1401A647-50	DDX1401A647100	603E10.06	Alexa-fluor@647	Intracyto flow cytometry

Applications tested: Intracyto flow cytometry, IF

Renno T, personal comm., 2010

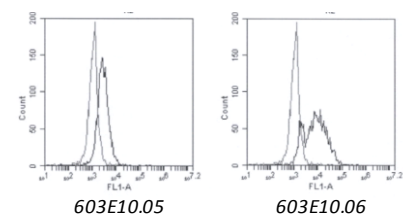


Intracytoplasmic FACS staining of human cells with 603E10.05



IF staining of human HeLa cells with 603E10.06

Bonnefont C, personal comm., 2011



Intracytoplasmic FACS staining of a canine cell line

Usage recommendation:

- *This monoclonal antibody may be used between 5-20 μ g/ml.
- *Optimal dilution should be determined by each laboratory for each application.
- *Coupled antibody: to maintain RT before use.

Aliquot storage conditions:

- 20°C. KEEP CONTENTS STERILE: no preservative.**
- Purified antibodies: avoid repeated freeze/thaw cycles.**
- Coupled antibodies: glycerol protects from freezing.**

Not for use in Humans. For research purpose only