

Monoclonal Anti-human, canine TLR7-CD287

Product reference: DDX0500

Description:

At least twelve members of the Toll family have been identified. TLR7 is expressed on plasmacytoid DCs, B and T lymphocytes, neutrophils, eosinophils, NK cells, and lung and placenta epithelial cells. TLR7 is localized to endosomal/lysosomal compartments and is reported to respond to single-stranded RNA. Plasmacytoid DCs express TLR7 and respond to activation by producing high amounts of IFN- α / β . TLR7 ligands are R848, Imiquimod (Imidazoquinolin family) and loxoribine (guanosin analog). (*Diebold S.S. et al, Science 2004, 303, 1529; Barchet W.A. et al, 2005, Eur J Immunol 3:236; Lund J.M. et al., 2004, PNAS 5598; Hell F. et al., 2004 Science, 303, 1526 ; Gilliet M et al.,2008, Natur Rev Immunol.8, 594*).The 66H3 clone was generated through mouse immunization with human TLR7-transfected eukaryotic cells, and was found to cross react with canine TLR7 (*Bonnefont C, personal communication*).

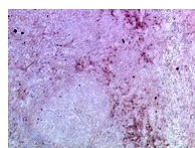
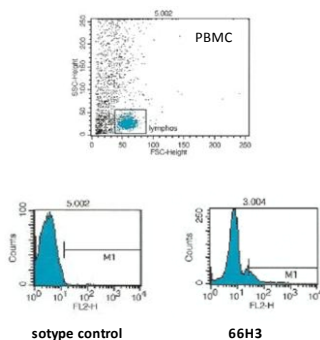
Clone: 66H3
Species: mouse
Specificity: human TLR7
Immunogen: human recombinant TLR7transfected eukaryotic cells
Species cross-reactivity: dog
Isotype: IgG1
Formulation/size: **Purified:** 100 μ g in 200 μ l / 50 μ g in 100 μ l Tris-NaCl pH 8
Coupled: 100 μ g in 200 μ l / 50 μ g in 100 μ l PBS 50% glycerol

Available formats:

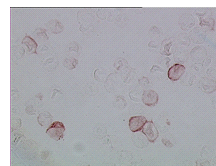
Reference N°		Format	Application tested
50 μ g	100 μ g		
DDX0500P-50	DDX0500P-100	Purified	Intracellular Flow cytometry, IHC
DDX0500A488-50	DDX0500A488-100	Alexa-fluor® 488	Intracellular Flow cytometry, IHC
DDX0500A546-50	DDX0500A546-100	Alexa- fluor® 546	Intracellular Flow cytometry, IHC
DDX0500A647-50	DDX0500A647-100	Alexa- fluor® 647	Intracellular Flow cytometry, IHC
DDX0500B-50	DDX0500B-100	Biotin	(on request)

Applications: IHC, intracellular flow cytometry

Intracellular FACS staining of human PBMC with 66H3

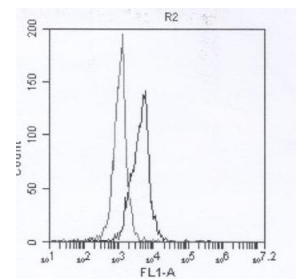


IHC staining of human tonsil with 66H3



huTLR7-transfected 293 cells stained with 66H3

Intracellular FACS staining of a canine cell line with 66H3



Bonnefont C, personal comm. 2011

Usage recommendation:

- *This monoclonal antibody may be used between 5-20 μ g/ml.
- *Optimal dilution should be determined by each laboratory for each application.
- *Coupled antibody: to maintain RT before use.

Aliquot storage conditions:

- 20°C. **KEEP CONTENTS STERILE: no preservative.**
- Purified antibodies: avoid repeated freeze/thaw cycles.
- Coupled antibodies: glycerol protects from freezing .

Not for use in Humans. For research purpose only