

Monoclonal Anti-human Neuropilin-1/CD304

Product reference: DDX0440

Description

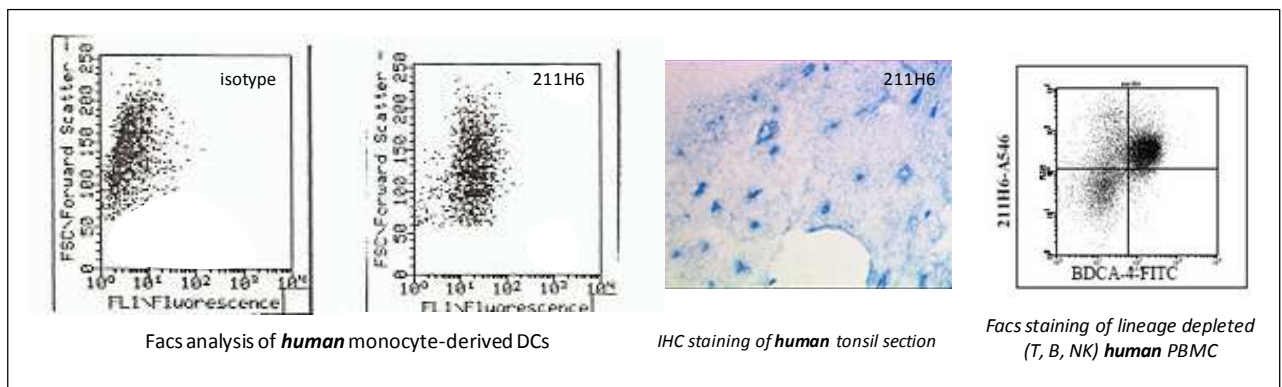
We have generated a mAb that identifies human pDCs *ex vivo*. In blood, 211H6 antigen is highly expressed on IL3R α ⁺ BDCA-2⁺ CD11c⁻ pDCs. It does not stain lymphocytes, monocytes, basophils and granulocytes. *In vitro* it is also expressed on monocyte-derived DCs. Upon maturation, in IL-3 and CD40L, or with *influenzae* virus, 211H6 is maintained at the cell surface. *In situ* 211H6 recognizes some isolated cells in T cell zones of tonsils, lymphatic vessels and high endothelial venules. The 211H6 antigen has been identified as BDCA-4. Neuropilin-1 is a membrane-bound co-receptor to a tyrosine kinase receptor for both vascular endothelial growth factor (VEGF) and semaphorin (SEMA3A) family members. Neuropilin 1 plays versatile roles in angiogenesis, axon guidance, cell survival, migration and invasion. (Dzionek A and al., 2000 *J. Immunol.*, 165: 6037-6046; Dzionek A. et al., 2002, *Human Immunology*, 63, 1133-48).

Clone: 211H6.01
Species: mouse
Specificity: human neuropilin-1 (epitope in extracellular domain)
Immunogen: CD34⁺ derived DCs
Species cross-reactivity: nd
Isotype: IgG1
Formulation/size: **Purified:** 100 μ g in 200 μ l / 50 μ g in 100 μ l Tris-NaCl pH 8
Coupled: 100 μ g in 200 μ l / 50 μ g in 100 μ l PBS 50% glycerol

Available formats:

| Reference N° | | Format | Application tested |
|----------------|-----------------|------------------|-------------------------|
| 50 μ g | 100 μ g | | |
| DDX0440P-50 | DDX0440P-100 | Purified | Flow cytometry, IHC, IP |
| DDX0440A488-50 | DDX0440A488-100 | Alexa-fluor® 488 | Flow cytometry |
| DDX0440A546-50 | DDX0440A546-100 | Alexa-fluor® 546 | |
| DDX0440A647-50 | DDX0440A647-100 | Alexa-fluor® 647 | |
| DDX0440B-50 | DDX0440B-100 | Biotin | (on request) |

Applications tested: Flow cytometry, IHC



Usage recommendation:

- *This monoclonal antibody may be used between 5-20 μ g/ml
- *Optimal dilution should be determined by each laboratory for each application
- *Coupled antibody: to maintain RT before using

Aliquot storage conditions: -20°C. **KEEP CONTENTS STERILE: no preservative.**
Purified antibodies: avoid repeated freeze/thaw cycles.
Coupled antibodies: glycerol protects from freezing.

Not for use in Humans. For research purpose only