

Monoclonal Anti-human, swine MMR/CD206 (Macrophage-Mannose-R)

Product reference: DDX0380

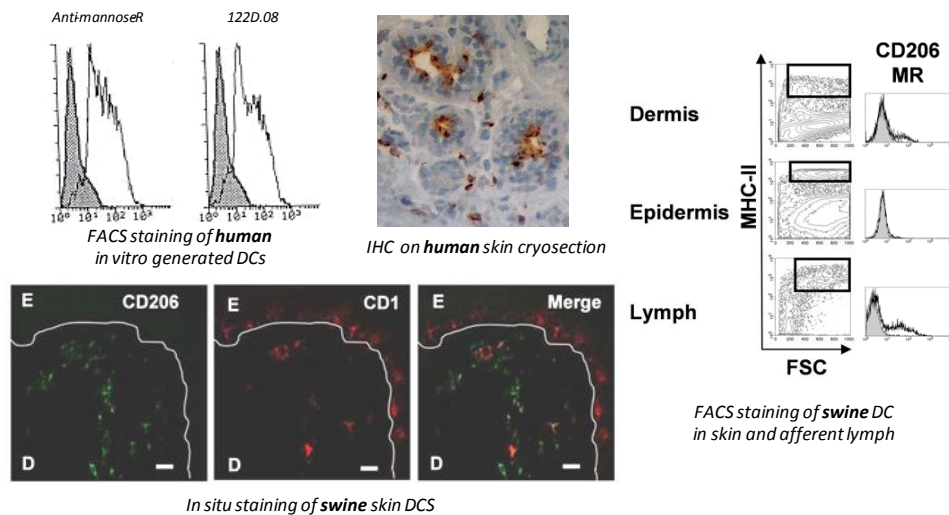
Description:

The mannose receptor (MR) /CD206 is a 175 kDa C-type lectin of type I membrane molecule, with 8 carbohydrate recognition domains (CRD) belonging to the pattern recognition receptors. It is an endocytic receptor of macrophages and endothelial cell subsets whose natural ligands include both self glycoproteins and microbial glycans. CD206 is predominantly expressed in tissue macrophages, myeloid dendritic cells, liver, skin, lymphoid organ and tumor. In humans, the MMR has been detected in cells located within the dermis, lamina propria, and T cell areas of the tonsil, in inflammatory epidermal DCs of atopic dermatitis patients, and in cells lining venous sinuses in the spleen. CD206 is also expressed by human monocytes-derived DCs. mAb 122D2.08 was obtained after mice immunization with human dendritic cells. It recognizes large proteins (160-200kDa), and its binding to *in vitro*-generated DC is inhibited by cell preincubation with mannan, suggesting that 122D.08 is directed against the macrophage mannose receptor. The uptake of mannosylated proteins (expressed on bacteria and fungi) is important for the biologic function of DC. (Sallusto F. *et al.*, 1995, *J. Exp. Med.*, 182, 389-40; Wollenberg A. *et al.*, *J Invest Dermatol*, 2002, 119, 5, 1096-102 ; Marquet F *et al*, *PLoS ONE*, vol 6 (1) e16320).

Clone: 122D2.08
Species: mouse
Specificity: human mannose receptor (extracellular part)
Immunogen: human (GM+TNF) DC subset
Species cross-reactivity: swine
Isotype: IgG1
Formulation/size: **Purified:** 100 µg in 200 µl Tris-NaCl pH 8
Coupled: 100 µg in 200 µl PBS 50% glycerol (*on request*)

Available formats:

Reference	Format	Application tested
DDX0380	purified	Surface Flow Cytometry, WB, IHC, IP, internalisation, inhibition of antibody binding by mannan, dextran-fic uptake



Usage recommendation: *This monoclonal antibody may be used between 1-10 µg/ml.
*Optimal dilution should be determined by each laboratory for each application.
*Coupled antibody: to maintain RT before use.

Aliquot storage conditions: -20°C. **KEEP CONTENTS STERILE: no preservative.**
Purified antibodies: avoid repeated freeze/thaw cycles.
Coupled antibodies: glycerol protects from freezing.

Not for use in Humans. For research purpose only