

# Monoclonal Anti-human Langerin/CD207

Product reference: **DDX0377**

## Description

Langerin/CD207 is a transmembrane C-type lectin receptor (CLR) of epidermal and mucosal Langerhans cells (LCs) that induces Birbeck granule formation. Langerin features a single carbohydrate recognition domain (CRD) with mannose-type specificity in its extracellular portion. Langerin is unique among the CLRs in that it contains an intracellular domain with a proline-rich motif. Langerin expression has not been reported outside the DC system. (*Valladeau J et al, 2002 J Immunol, 168 : 782-792*) (*Douillard P et al, 2005 J Invest Dermatol, 125: 983-994*)

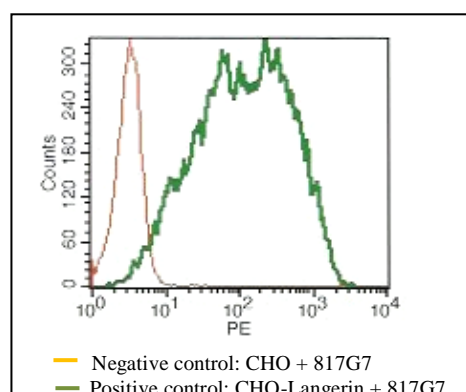
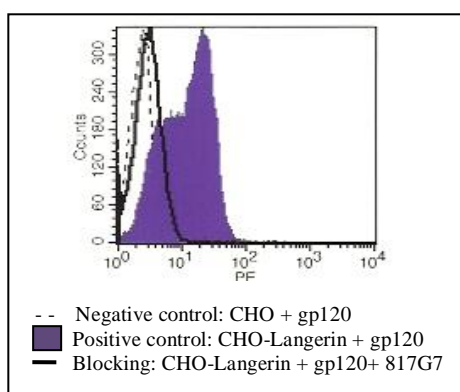
**Clone:** 817G7  
**Species:** mouse  
**Specificity:** human Langerin (extracellular epitope)  
**Immunogen:** human Langerin-transfected eukaryotic cells

**Species cross- reactivity:** nd  
**Isotype:** IgG1  
**Purification:** QMA Hyper D ion exchange chromatography  
**Formulation/size:** **Purified:** 100 µg in 200µl / 50 µg in 100 µl Tris-NaCl pH 8  
**Coupled:** 100 µg in 200µl / 50 µg in 100 µl PBS 50% glycerol

**Available formats:** (other clones available on request)

Reference N°		Format	Application tested
50 µg	100 µg		
DDX0377P-50	DDX0377P-100	Purified	Surface Flow cytometry, blocks HIV-gp120

**Applications tested:** Flow cytometry, gp120 binding blocking



**Usage recommendation:** \*This monoclonal antibody may be used between 5-20 µg/ml  
 \*Optimal dilution should be determined by each laboratory for each application.

**Aliquot storage conditions** -20°C. **KEEP CONTENTS STERILE: no preservative.**  
**Purified antibodies: avoid repeated freeze/thaw cycles.**

Not for use in Humans. For research only