

# Monoclonal Anti-mouse, human, rat, swine Langerin /CD207

**Product reference: DDX0368**

## Description:

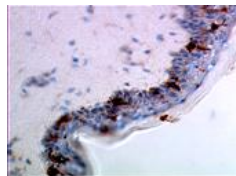
Langerin/CD207 is a transmembrane C-type lectin receptor (CLR) of epidermal and mucosal Langerhans cells (LCs) that induces Birbeck granule formation. Langerin features a single carbohydrate recognition domain (CRD) with mannose-type specificity in its extracellular portion. Langerin is unique among the CLRs in that it contains an intracellular domain with a proline-rich motif. Langerin expression has not been reported outside the DC system. In mouse, clone 306G9 stains lymph node dendritic cells (*Henri et al, 2001, J. Immunol, 167: 741-748*) (*Valladeau J. et al, 2002 J Immunol, 168: 782*).

**Clone:** 306G9  
**Species:** mouse  
**Specificity:** mouse and human Langerin (intracellular epitope)  
**Immunogen:** mouse langerin-transfected COP5 cells  
**Species cross-reactivity:** human, rat, swine  
**Isotype:** IgG1  
**Purification:** QMA Hyper D ion exchange chromatography  
**Formulation/size:** **Purified:** 100 µg in 200µl / 50 µg in 100 µl Tris-NaCl pH 8  
**Coupled:** 100 µg in 200µl / 50 µg in 100 µl PBS 50% glycerol

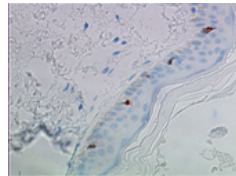
**Available formats:** (other clones available on request)

Reference N°		Format	Application in human	Application in mouse
50 µg	100 µg			
DDX0368P-50	DDX0368P-100	Purified	Intracellular Flow cytometry , paraffin (Bouin), IHC	Intracellular Flow cytometry
DDX0368A488-50	DDX0368A488-100	Alexafluor®488	Intracellular Flow cytometry, IF	Intracellular Flow cytometry, IF
DDX0368A546-50	DDX0368A546-100	Alexafluor®546	IF	IF
DDX0368A647-50	DDX0368A647-100	Alexafluor®647	Intracellular Flow cytometry	Intracellular Flow cytometry
DDX0368B-50	DDX0368B-100	Biotin		

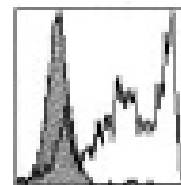
**Applications tested:** Flow cytometry, IF, IHC



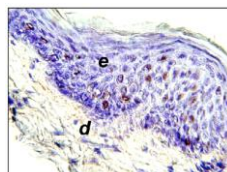
IHC staining of **human skin** frozen section with 306G9 antibody



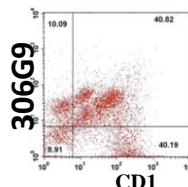
IHC staining of **human skin** paraffin section with 306G9 antibody



Facs analysis of **mouse** Langerin-transfected COP5 cells stained with 306G9 antibody



IHC staining of Langerhans cells in **porcine skin tissue** section



Facs double-staining of **porcine skin-derived DCs**

**Usage recommendation:** \*This monoclonal antibody may be used between 5-20 µg/ml  
\*Optimal dilution should be determined by each laboratory for each application  
\*Coupled antibody: to maintain RT before using

**Aliquot storage conditions** -20°C. **KEEP CONTENTS STERILE: no preservative.**  
**Purified antibodies:** avoid repeated freeze/thaw cycles.  
**Coupled antibodies:** glycerol protects from freezing.

Not for use in Humans. For research only, not for diagnostic or therapeutic use.