

Monoclonal Anti-mouse, human, swine Langerin/CD207

Product reference: DDX0361

Description

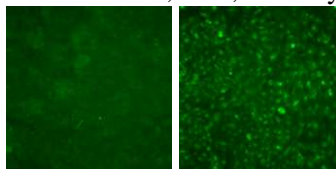
Langerin/CD207 is a transmembrane C-type lectin receptor (CLR) of epidermal and mucosal Langerhans cells (LCs) that induces Birbeck granule formation. Langerin features a single carbohydrate recognition domain (CRD) with mannose-type specificity in its extracellular portion. Langerin is unique among the CLRs in that it contains an intracellular domain with a proline-rich motif. Langerin expression has not been reported outside the DC system. (Valladeau J et al, 2002 J Immunol, 168 : 782-792) (Douillard P et al, 2005 J Invest Dermatol, 125: 983-994)

Clone: 310F7.02
Species: mouse
Specificity: mouse Langerin (intracellular epitope)
Immunogen: mouse Langerin-transfected eukaryotic cells
Species cross- reactivity: rat, human, pig
Isotype: IgG1
Purification: QMA Hyper D ion exchange chromatography
Formulation/size: **Purified:** 100 µg in 200µl / 50 µg in 100 µl Tris-NaCl pH 8
Coupled: 100 µg in 200µl / 50 µg in 100 µl PBS 50% glycerol

Available formats: (other clones available on request)

Reference N°		Format	Application tested
50 µg	100 µg		
DDX0361P-50	DDX0361P-100	Purified	Paraffin (Bouin) in human section, IHC,ELISA
DDX0361A488-50	DDX0361A488-100	Alexa-fluor®488	Intracellular Flow cytometry, IF
DDX0361A546-50	DDX0361A546-100	Alexa- fluor®546	IF
DDX0361A647-50	DDX0361A647-100	Alexa- fluor®647	Flow cytometry
DDX0361B-50	DDX0361B-100	Biotin	

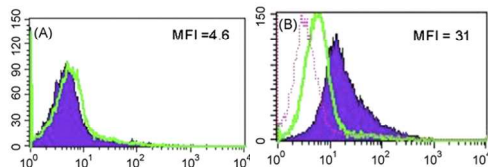
Applications tested: IF, IHC, Flow cytometry



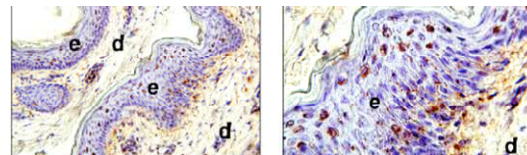
IF 310F7.02 staining of CHO cells transfected (right) or not (left) with mouse Langerin



IHC staining of human skin paraffin section with 310F7.02



FACS staining with 310F7.02 of cells derived from overnight culture of porcine skin biopsies permeabilized (B) or not (A).



Porcine skin cryosections were stained with 310F7.02
A:16X; B:40X; e: epidermis; d: dermis

Usage recommendation:

- *This monoclonal antibody may be used between 5-20 µg/ml
- *Optimal dilution should be determined by each laboratory for each application
- *Coupled antibody: to maintain RT before using

Aliquot storage conditions

- 20°C. KEEP CONTENTS STERILE: no preservative.
- Purified antibodies:** avoid repeated freeze/thaw cycles.
- Coupled antibodies:** glycerol protects from freezing.

Not for use in Humans. For research only