

# Monoclonal Anti-human Langerin/CD207

**Product reference: DDX0360**

## Description

Langerin/CD207 is a transmembrane C-type lectin receptor (CLR) of epidermal and mucosal Langerhans cells (LCs) that induces Birbeck granule formation. Langerin features a single carbohydrate recognition domain (CRD) with mannose-type specificity in its extracellular portion. Langerin is unique among the CLRs in that it contains an intracellular domain with a proline-rich motif. Langerin expression has not been reported outside the DC system.

(Valladeau J et al, 2002; *J. Immunol.*, 168 : 782-779 ; Douillard P et al, 200; *J. Invest. Dermatol.*, 125: 983-994)

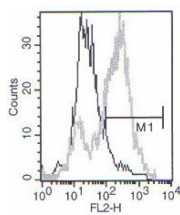
<b>Clone:</b>	<b>808E10.01</b>
<b>Species:</b>	mouse
<b>Specificity:</b>	human Langerin (extracellular epitope)
<b>Immunogen:</b>	human Langerin-transfected eukaryotic cells
<b>Species cross-reactivity:</b>	negative
<b>Isotype:</b>	IgG1
<b>Purification:</b>	QMA Hyper D ion exchange chromatography
<b>Formulation/size:</b>	<b>Purified:</b> 100 µg in 200 µl / 50 µg in 100 µl Tris-NaCl pH 8
	<b>Coupled:</b> 100 µg in 200 µl / 50 µg in 100 µl PBS 50% glycerol

**Available formats:** (other clones available on request)

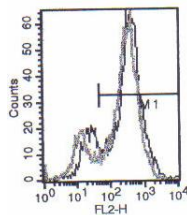
Reference N°		Format	Application tested
50 µg	100 µg		
DDX0360P-50	DDX0360P-100	Purified	Flow cytometry, blocks HIV-gp120, IHC
DDX0360A488-50	DDX0360A488-100	Alexa-fluor® 488	Surface Flow cytometry, IF
DDX0360A546-50	DDX0360A546-100	Alexa- fluor® 546	IF
DDX0360A647-50	DDX0360A647-100	Alexa- fluor® 647	Flow cytometry
DDX0360B-50	DDX0360B-100	Biotin	Flow cytometry

## Applications tested:

IHC, Flow cytometry, blocking of gp120 binding



Blocking HIV-gp120  
(808E10.01 anti-langerin clone)



Non-blocking anti-langerin clone



Human skin frozen section:  
Langerhans cells staining with 808E10.01-HRP

## Langerin-gp120 blocking protocol:

Mock- and Langerin-transfected CHO cells are incubated with biotin-labelled gp160 (5µg/ml) and clone 808E10.01 at (1 to 10µg/ml) in PBS 45 min. at RT. Cells were washed in PBS 5min at 1600rpm, and stained with Streptavidin-PE 30 min at 4°C (DAKO). A last PBS wash is performed before Flow cytometry analysis.

## Usage recommendation:

- \*This monoclonal antibody may be used between 5-20 µg/ml.
- \*Optimal dilution should be determined by each laboratory for each application.
- \*Coupled antibody: to maintain RT before use.

## Aliquot storage conditions:

- 20°C. KEEP CONTENTS STERILE: no preservative.**
- Purified antibodies: avoid repeated freeze/thaw cycles.**
- Coupled antibodies: glycerol protects from freezing.**

**Not for use in Humans. For research only**