

## Monoclonal Anti-human DC-SIGN-like

**Product reference: DDX0201**

**Description:**

We have generated an antibody recognizing an antigen which has a tissular distribution and a size (western blot) identical to DC-SIGN. This antibody does not recognize DC-SIGN 1 expressed in HeLa cells. DC-SIGN (“**DC Specific, ICAM-3 Grabbing, Nonintegrin**”) / CD209 is a type II membrane protein with an external mannose-binding C-type lectin domain, DC-SIGN is expressed by immature and mature dendritic cells (DC). In the skin, DC-SIGN<sup>+</sup> DC are exclusively located in the dermis. DC-SIGN binds to ICAM-3 on resting T cells, establishing DC-T cell contact and adaptive immunity. DC-SIGN is a high affinity receptor for HIV gp120, allowing HIV capture and transmission to CD4<sup>+</sup> T cells. In addition to HIV, DC-SIGN is a receptor for a number of other viral and cellular pathogens including *Mycobacterium Tuberculosis*, and is a major player in microbial evasion of the immune system.

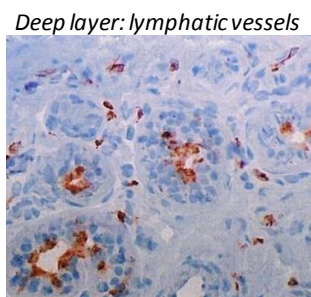
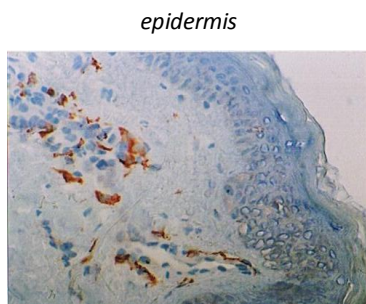
(Geijtenbeek, T and al, *Cell*; 2000; 100: 587-597; van Kooyk Y and al, *Nat. Rev. Immunol.*; 2003; 3: 697-709) (Schwartz Olivier Institut Pasteur-Paris)

<b>Clone:</b>	<b>128G8</b>
<b>Species:</b>	mouse
<b>Specificity:</b>	human (epitope in extracellular domain)
<b>Immunogen:</b>	human (GMCSF + TNF) DC subset
<b>Species cross-reactivity:</b>	nd
<b>Isotype:</b>	IgM
<b>Purification:</b>	QMA Hyper D ion exchange chromatography
<b>Formulation/size:</b>	<b>Purified:</b> 100 µg in 200 µl / 50 µg in 100 µl Tris-NaCl pH 8

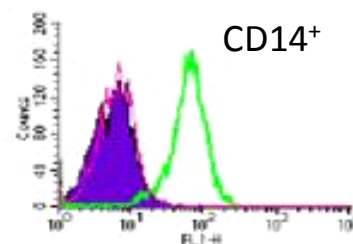
**Available format:** other formats available on request

Reference N°		Format	Application tested
50 µg	100 µg		
DDX0201P-50	DDX0201P-100	purified	Surface Flow cytometry, antigen uptake, IHC, WB

**Applications tested:** Flow cytometry, IHC



Frozen serial sections of **human** skin stained with 128G8



DC-SIGN like expression on **human** monocyte-derived DCs subsets

**Usage recommendation:** \*This monoclonal antibody may be used between 5-20 µg/ml.  
\*Optimal dilution should be determined by each laboratory for each application.

**Aliquot storage conditions:** **-20°C. KEEP CONTENTS STERILE: no preservative.**  
**Purified antibodies:** avoid repeated freeze/thaw cycles.  
**Coupled antibodies:** glycerol protects from freezing.

**Not for use in Humans. For research purpose only**