

Monoclonal Anti-human DC-LAMP/CD208

Product reference: DDX0193

Description:

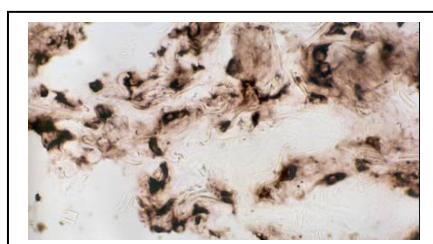
The dendritic cell lysosomal-associated membrane protein (DC-LAMP)/CD208 is a type I integral transmembrane glycoprotein mostly homologous to CD68, of about 45 kDa in the mouse and 90 kDa in human (due to extensive glycosylation), with a bipartite C-terminal structure divided by a serine/proline rich region, a transmembrane domain and a conserved tyrosine-based lysosomal targeting motif in its cytoplasmic tail. Initially cloned as a specific marker of human mature dendritic cells (DCs), DC-LAMP has been subsequently shown to be expressed in alveolar type II pneumocytes. In both cell types, the molecule is found in the limiting membrane of intracellular multi-lamellar bodies, known as MIIC (MHC class II compartments) in human mature DC and as lung surfactant-containing lamellar bodies in type II pneumocytes. In the latter cell type, DC-LAMP expression is also detected at the cell surface. (*de Saint-Vis B et al, 1998 ; Immunity ; 9: 325-336*)

Clone:	109G3
Species:	mouse
Specificity:	human DC-LAMP (epitope in intracytoplasmic domain)
Immunogen:	human DC-LAMP alkaline phosphatase fusion protein
Species cross-reactivity:	nd
Isotype:	IgG1
Purification:	QMA Hyper D ion exchange chromatography
Formulation/size:	Purified: 100 µg in 200µl / 50 µg in 100 µl Tris-NaCl pH 8
	Coupled: 100 µg in 200µl / 50 µg in 100 µl PBS 50% glycerol

Available formats: (other clones available on request)

Reference N°		Format	Application tested
50 µg	100 µg		
DDX0193P-50	DDX0193P-100	Purified	Intra Flow cytometry, IHC
DDX0193A488-50	DDX0193A488-100	Alexa-fluor® 488	Intra Flow cytometry , IF
DDX0193A546-50	DDX0193A546-100	Alexa-fluor® 546	IF
DDX0193A647-50	DDX0193A647-100	Alexa-fluor® 647	Intra Flow cytometry
DDX0193B-50	DDX0193B-100	Biotin	(on request)

Applications tested: IHC



Cryosection of human lung type II pneumocytes stained with purified 109G3+goat anti-mouse-HRP

Other application: Flow cytometry

Usage recommendation:

- *This monoclonal antibody may be used between 5-20 µg/ml.
- *Optimal dilution should be determined by each laboratory for each application.
- *Coupled antibody: to maintain RT before use.

Aliquot storage conditions: -20°C. **KEEP CONTENTS STERILE: no preservative.**
Purified antibodies: avoid repeated freeze/thaw cycles.
Coupled antibodies: glycerol protects from freezing.

Not for use in Humans. For research purpose only