

Monoclonal Anti-mouse DC-LAMP/CD208

Product reference: DDX0192

Description:

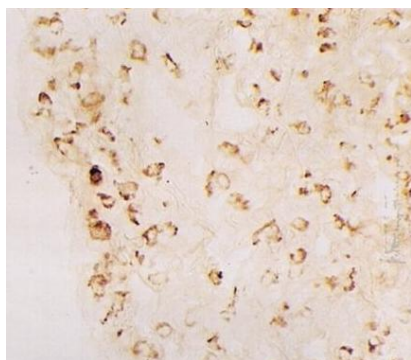
The dendritic cell lysosomal-associated membrane protein (DC-LAMP)/CD208 is a type I integral transmembrane glycoprotein mostly homologous to CD68, of about 45 kDa in the mouse and 90 kDa in human (due to extensive glycosylation), with a bipartite C-terminal structure divided by a serine/proline rich region, a transmembrane domain and a conserved tyrosine-based lysosomal targeting motif in its cytoplasmic tail. DC-LAMP is specifically expressed by human DCs upon activation. However, its mouse counterpart has not been detected in mature DCs. DC-LAMP is constitutively expressed by mouse. Confocal and immunoelectron microscopy have shown that mouse DC-LAMP protein co-localizes with lbm180, a specific marker for the limiting membrane of lamellar bodies that contains lung surfactant protein B. (*Salaun B et al, 2003 ; Eur. J. Immunol., 33 :9, 2619-29 ; Salaun B et al, 2004 ; Am. J. Pathol., 164 :3, 861-71 ; Rochereau N et al, Vaccine, 2011*).

Clone: 1006F7.05
Species: rat
Specificity: murine DC-LAMP
Immunogen: recombinant murine DC-LAMP
Species cross-reactivity: none
Isotype: IgG2a
Purification: QMA hyper D ion exchange chromatography
Formulation/size: **Purified:** 100 µg in 200µl / 50 µg in 100 µl Tris-NaCl pH 8
Coupled: 100 µg in 200µl / 50 µg in 100 µl PBS 50% glycerol

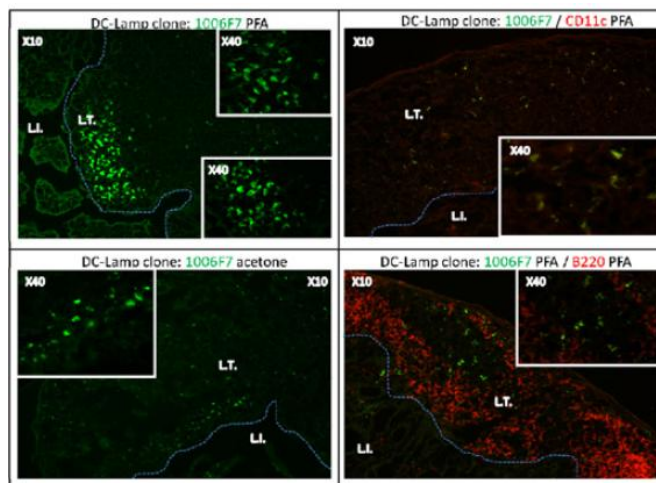
Available formats: (other clones available on request)

Reference N°		Format	Application tested
50 µg	100 µg		
DDX0192P-50	DDX0192P-100	Purified	IHC
DDX0192A488-50	DDX0192A488-100	Alexa-fluor® 488	Surface and Intra Flow cytometry
DDX0192A546-50	DDX0192A546-100	Alexa- fluor® 546	IF
DDX0192A647-50	DDX0192A647-100	Alexa- fluor® 647	Surface and Intra Flow cytometry
DDX0192B-50	DDX0192B-100	Biotin	(on request)

Applications tested: IHC



IHC on murine type II pneumocytes



Immunostaining of murine intestine cryosections fixed with Acetone or PFA
 IL: intestinal lumen; LT: lymphoid tissue

Usage recommendation: *This monoclonal antibody may be used between 5-20µg/ml.
 *Optimal dilution should be determined by each laboratory for each application.
 *Coupled antibody: to maintain RT before use.

Aliquot storage conditions: -20°C. **KEEP CONTENTS STERILE: no preservative.**
Purified antibodies: avoid repeated freeze/thaw cycles.
Coupled antibodies: glycerol protects from freezing.

Not for use in Humans. For research purpose only