

Monoclonal Anti-mouse, human, cat, dog, sheep DC-LAMP/CD208

Product reference: DDX0191

Description:

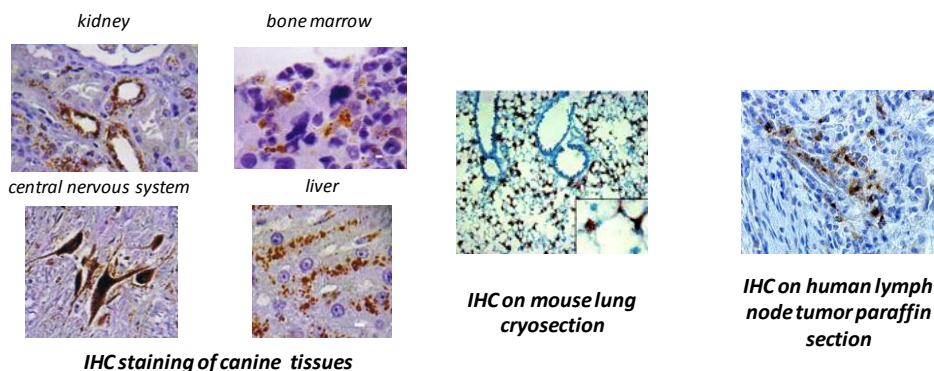
The dendritic cell lysosomal-associated membrane protein (DC-LAMP)/CD208 is a type I integral transmembrane glycoprotein mostly homologous to CD68, of about 45 kDa in mouse and 90 kDa in human (due to extensive glycosylation), with a bipartite C-terminal structure divided by a serine/proline rich region, a transmembrane domain and a conserved tyrosine-based lysosomal targeting motif in its cytoplasmic tail. Initially cloned as a specific marker of human mature dendritic cells (DCs), DC-LAMP has been subsequently shown to be expressed in alveolar type II pneumocytes. In both cell types, DC-LAMP is found in the limiting membrane of intracellular multi-lamellar bodies, known as MIIC (MHC class II compartments) in human mature DC and as lung surfactant-containing lamellar bodies in type II pneumocytes. In the latter cell type, DC-LAMP expression is also detected at the cell surface. (*de Saint-Vis B et al, 1998 ; Immunity ; 9: 325-336 ; Salaun B et al, 2003 ; Eur. J. Immunol., 33 :9, 2619-29 ; Salaun B et al, 2004 ; Am. J. Pathol., 164 :3, 861-71*).

Clone:	1010E1.01
Species:	rat
Specificity:	murine DC-LAMP (epitope in intracytoplasmic domain)
Immunogen:	recombinant murine DC LAMP
Species cross-reactivity:	human, cat, dog, sheep
Isotype:	IgG2a
Purification:	QMA Hyper D ion exchange chromatography
Formulation/size:	Purified: 100 µg in 200µl / 50 µg in 100 µl Tris-NaCl pH 8 Coupled: 100 µg in 200µl / 50 µg in 100 µl PBS 50% glycerol

Available formats: (other clones available on request)

Reference N°		Format	Application tested
50 µg	100 µg		
DDX0191P-50	DDX0191P-100	Purified	IHC paraffin (formol, Bouin) in human
DDX0191A488-50	DDX0191A488-100	Alexa-fluor® 488	Intra Flow cytometry, IF
DDX0191A546-50	DDX0191A546-100	Alexa- fluor® 546	IF
DDX0191A647-50	DDX0191A647-100	Alexa- fluor® 647	Intra Flow cytometry
DDX0191B-50	DDX0191B-100	Biotin	(on request)

Applications tested: IHC



Other application: Flow cytometry: low intensity of staining

Usage recommendation:

- *This monoclonal antibody may be used between 5-25 µg/ml.
- *Optimal dilution should be determined by each laboratory for each application.
- *Coupled antibody: to maintain RT before use.

Aliquot storage conditions: -20°C. **KEEP CONTENTS STERILE: no preservative.**
Purified antibodies: avoid repeated freeze/thaw cycles.
Coupled antibodies: glycerol protects from freezing.

Not for use in Humans. For research purpose only