

Monoclonal Anti-human, sheep DC-LAMP/CD208

Product reference: DDX0190

Description

The dendritic cell lysosomal-associated membrane protein (DC-LAMP)/CD208 is a type I integral transmembrane glycoprotein mostly homologous to CD68, of about 45 kDa in mouse and 90 kDa in human (glycosylation), with a bipartite C-terminal structure divided by a serine/proline rich region, a transmembrane domain and a conserved tyrosine-based lysosomal targeting motif in its cytoplasmic tail. Initially cloned as a specific marker of human mature dendritic cells (DCs), DC-LAMP has been subsequently shown to be expressed in alveolar type II pneumocytes. In both cell types, the molecule is found in the limiting membrane of intracellular multi-lamellar bodies, known as MIIC (MHC class II compartments) in human mature DCs and as lung surfactant-containing lamellar bodies in type II pneumocytes. In the latter cell type, DC-LAMP expression is also detected at the cell surface. (*de Saint-Vis B et al, 1998 ; Immunity ; 9:325-336*)

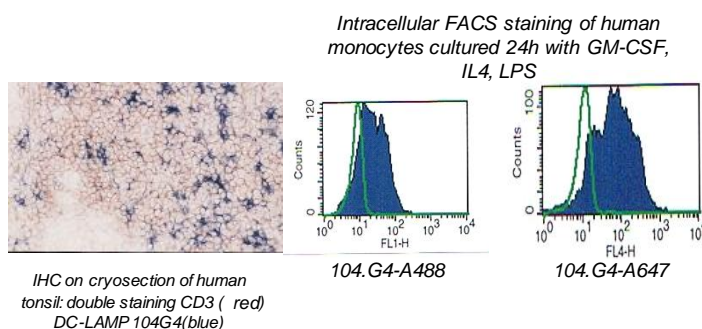
Clone: 104G4
Species: mouse
Specificity: human DC-LAMP (epitope in intracytoplasmic domain)
Immunogen: human DC-LAMP alkaline phosphatase fusion protein
Species cross-reactivity: sheep
Isotype: IgG1
Purification: QMA Hyper D ion exchange chromatography
Formulation/size: **Purified:** 100 µg in 200µl / 50 µg in 100 µl Tris-NaCl pH 8
Coupled: 100 µg in 200µl / 50 µg in 100 µl PBS 50% glycerol

Available formats: (other clones available on request)

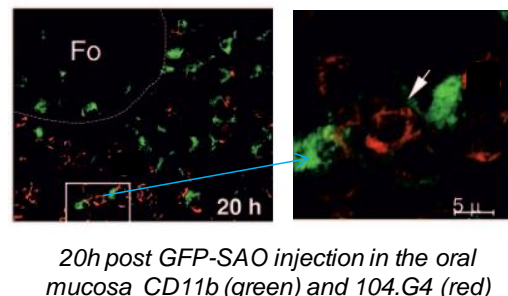
Reference N°		Format	Application tested
50 µg	100 µg		
DDX0190P-50	DDX0190P-100	Purified	Intracyto Flow cytometry, IHC
DDX0190A488-50	DDX0190A488-100	Alexa-fluor®488	Intracyto Flow cytometry, IF
DDX0190A546-50	DDX0190A546-100	Alexa-fluor®546	IF
DDX0190A647-50	DDX0190A647-100	Alexa-fluor®647	Intracyto Flow cytometry
DDX0190B-50	DDX0190B-100	Biotin	(on request)

Applications tested:

IHC, Intracellular flow cytometry



Sheep submaxillary lymph node cortex cryosection



Usage recommendation:

- *This monoclonal antibody may be used between 5-20 µg/ml.
- *Optimal dilution should be determined by each laboratory for each application.
- *Coupled antibody: to maintain RT before use.

Aliquot storage conditions:

- 20°C. **KEEP CONTENTS STERILE: no preservative.**
- Purified** antibodies: avoid repeated freeze/thaw cycles.
- Coupled** antibodies: glycerol protects from freezing.

Not for use in Humans. For research purpose only