

Monoclonal Anti-human CD40L /CD154

Product reference: DDX0140

Description

CD40 ligand also known as TRAP, gp39, TNFSF5, is a 261 amino acid type II transmembrane glycoprotein belonging to the TNF superfamily. CD40 ligand is expressed predominantly on activated CD4⁺ T cells and is also found on other cell types, including NK cells, mast cells, basophils and eosinophils. Genetic alterations in the CD40L results in the absence of a functional molecule on activated T cells and are responsible for the occurrence of X-linked hyper-IgM syndrome. LL48 clone is a CD40L neutralizing antibody and plays an important role in costimulatory interactions between T and B lymphocytes, and antigen-presenting cells and lymphocytes regulating the immune system at multiple levels.

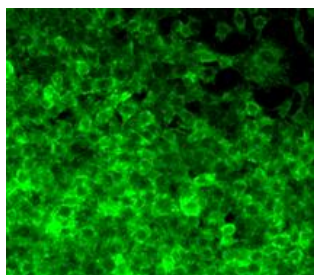
(Tong AW *et al*, 2001, *Clin. Canc. Res.*, 7:691-703; Hill A. *et al*, 1993; *Nature*, 361:494-503; Péguet-Navarro J. *et al*, 1995; *J. Immunol.*, 155:4241-4247).

Clone: LL48
Species: mouse
Specificity: human CD40L
Immunogen: Chimeric CD40L-Ig-transfected COS-7 cells
Species cross-reactivity: nd
Isotype: IgG2a
Purification: QMA Hyper D ion exchange chromatography
Formulation/size: **Purified:** 100 µg in 200 µl / 50 µg in 100 µl Tris-NaCl pH 8
Coupled: 100 µg in 200 µl / 50 µg in 100 µl PBS 50% glycerol

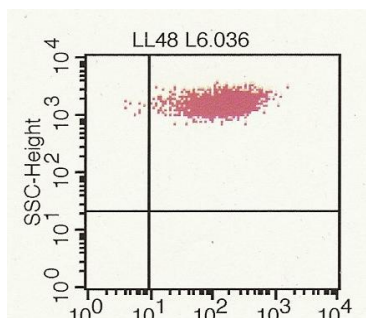
Available formats: (other formats available on request)

Reference N°		Format	Application tested
50 µg	100 µg		
DDX0140P-50	DDX0140P-100	Purified	Cell culture inhibition in MELR H3 thymidine uptake proliferative assay Immunofluorescence

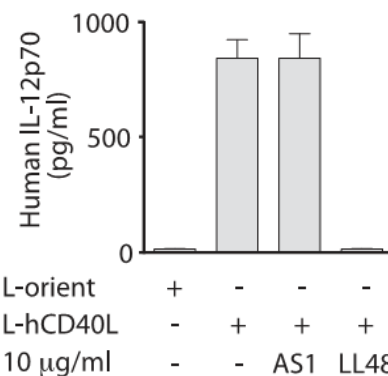
Applications tested: IF, Flow cytometry, neutralization of CD40L biological effects



IF staining of hCD40L-transfected L cells with LL48 clone



FACS staining of hCD40L-transfected L cells with LL48 clone



Inhibition of IL12 production by CD40L-stimulated human monocyte-derived DCs by LL48 clone (Stax AM *et al*, 2008, *J Immunol Methods*)

Usage recommendation:

- *This monoclonal antibody may be used between 5-20 µg/ml.
- *Optimal dilution should be determined by each laboratory for each application.
- *Coupled antibody: to maintain RT before use.

Aliquot storage conditions:

- 20°C. KEEP CONTENTS STERILE: no preservative.**
- Purified antibodies: avoid repeated freeze/thaw cycles.**
- Coupled antibodies: glycerol protects from freezing.**

Not for use in Humans. For research purpose only