

Monoclonal Anti-human CD21 long isoform (CD21L)

Product reference: DDX0120

Description

An antibody has been generated that specifically recognizes human follicular dendritic cells (FDCs) on the long CR2 / CD21L isoform (CD21L). Follicular dendritic cells represent a cell-type ontogenetically distinct from all other Dendritic Cells (DCs). They are found within B lymphocyte follicles of secondary lymphoid tissue. At the opposite, B lymphocytes selectively express the short CR2 / CD21 lacking exon 10a (CD21S). mAb 7D6 does not recognize CD21 expressed on other cells.

(Liu Y.J. et al, 1997; J. Exp. Med.185: 165-170)

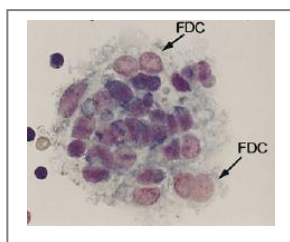
Clone:	7D6
Species:	mouse
Specificity:	human follicular dendritic cells
Immunogen:	enriched-human tonsillar FDCs (follicular dendritic cells)
Species cross- reactivity:	nd
Isotype:	IgG1
Purification:	QMA Hyper D ion exchange chromatography
Formulation/size:	Purified: 100 µg in 200 µl / 50 µg in 100 µl Tris-NaCl pH 8
	Coupled: 100 µg in 200 µl / 50 µg in 100 µl PBS 50% glycerol

Available formats:

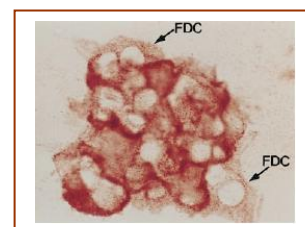
Reference		Format	Application tested
50µg	100µg		
DDX0120P-50	DDX0120P-100	purified	IHC frozen section

Applications tested:

IHC.



Giemsa staining of isolated FDCs clusters.



mAb 7D6 staining on FDC clusters. Slides were incubated with mAb 7D6 and subsequently with a sheep anti-mouse IgG1. The binding of antibody was revealed using APAAP method and developed by Fast red substrate.

Usage recommendation:

- *This monoclonal antibody may be used between 1-15 µg/ml.
- *Optimal dilution should be determined by each laboratory for each application.
- *Coupled antibody: to maintain RT before use.

Aliquot storage conditions:

- 20°C. KEEP CONTENTS STERILE: no preservative.**
- Purified antibodies: avoid repeated freeze/thaw cycles.**
- Coupled antibodies: glycerol protects from freezing.**

Not for use in Humans. For research purpose only