

Monoclonal Anti-human, canine CD303

Product reference: DDX0045

Description:

CD303/ DLEC/ BDCA2 / CLECSF7 / CLECSF11 /

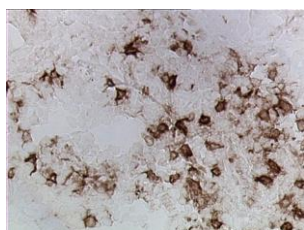
CD303/BDCA2 is a type II membrane glycoprotein of 213 amino acids with a molecular mass of 25 kD which belongs to the group II of human calcium-dependent (C-type) lectin receptors (CLRs) with a single carbohydrate recognition domain (CRD) predicting mannose-type specificity. Protein expression is restricted to the immature plasmacytoid dendritic cell subset on which BDCA2 is involved in ligand internalization, processing and presentation, as well as in inhibition of IFN- α/β synthesis. (*Treilleux I et al, 2004 Clinical Cancer Research, 10: 7466; Dzionek A. et al., 2000, J.Immunol.165, 6037; Dzionek A. et al., 2001, J.Exp.Med. 194, 1823-1833*). The 109B8 clone was demonstrated to cross-react with the canine CD303 (*Bonnefont C, personal communication, 2011*).

Clone: 109B8
Species / Isotype: mouse, IgG1
Specificity: human CD303
Immunogen: human recombinant BDCA-2 like protein
Species cross- reactivity: dog
Purification: QMA Hyper D ion exchange chromatography
Formulation/size: **Purified:** 100 μg in 200 μl / 50 μg in 100 μl Tris-NaCl pH 8
Coupled: 100 μg in 200 μl / 50 μg in 100 μl PBS 50% glycerol

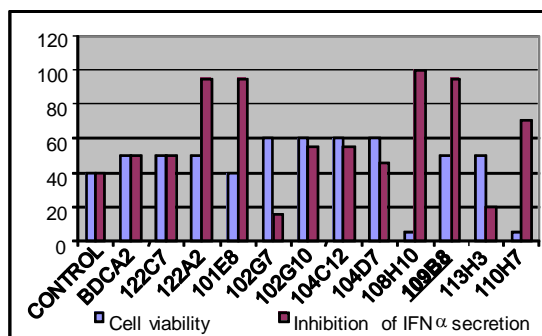
Available formats: (other clones available on request)

Reference N°		Format	Application tested
50 μg	100 μg		
DDX0045P-50	DDX0045P-100	Purified	IHC, inhibition of IFN α secretion
DDX0045A488-50	DDX0045A488-100	Alexa-fluor@488	Surface Flow cytometry, IF
DDX0045A546-50	DDX0045A546-100	Alexa-fluor@546	IF
DDX0045A647-50	DDX0045A647-100	Alexa-fluor@647	Surface Flow cytometry
DDX0045B-50	DDX0045B-100	Biotin	IHC

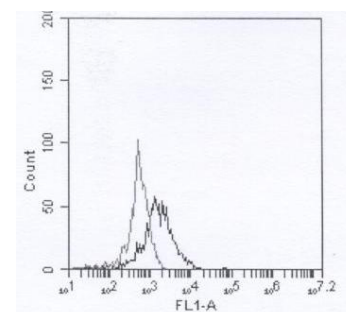
Applications tested: IHC, surface flow cytometry, IF, inhibition of IFN α secretion



Human tonsil frozen section stained with 109B8 antibody



Inhibition of IFN α secretion by cpg2216-activated enriched human pDC



FACS staining of canine primary cells with 109B8

Usage recommendation:

- *This monoclonal antibody may be used between 5-20 $\mu\text{g}/\text{ml}$.
- *Optimal dilution should be determined by each laboratory for each application.
- *Coupled antibody: to maintain RT before use.

Aliquot storage conditions:

- 20°C. KEEP CONTENTS STERILE: no preservative.**
- Purified antibodies: avoid repeated freeze/thaw cycles.**
- Coupled antibodies: glycerol protects from freezing.**

Not for use in Humans. For research purpose only