

Monoclonal Anti-human CD303

Product reference: DDX0043

Description

CD303/ DLEC/ BDCA-2 / CLECSF7 / CLECSF11

CD303 is a calcium dependent type II lectin also known as Blood-Dendritic-Cell-Antigen-2 specifically expressed by human plasmacytoid dendritic cells (pDC). CD303/BDCA-2 is a 25 kDa type II membrane glycoprotein with a single carbohydrate recognition domain (CRD) predicting mannose-type specificity. Protein expression is restricted to the immature plasmacytoid dendritic cells subset. BDCA-2 is involved in ligand internalization, processing and presentation, as well as in inhibition of IFN- α/β synthesis.

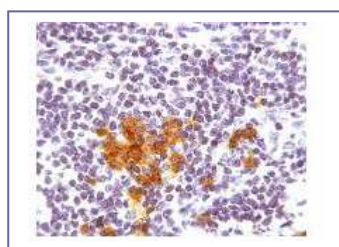
(Treilleux I. et al, 2004, Clin. Canc. Res., 10:7466; Dzionek A. et al, 2000, J. Immunol., 165, 6037-2001, J. Exp. Med. 194, 1823-1834)

Clone:	124B3.13
Species:	mouse
Specificity:	human CD303
Immunogen:	human recombinant BDCA-2
Species cross-reactivity:	rat, mouse
Isotype:	IgG1
Purification:	QMA Hyper D ion exchange chromatography
Formulation/size:	Purified: 100 μ g in 200 μ l Tris-NaCl pH 8
	Coupled: 100 μ g in 200 μ l PBS 50% glycerol

Available formats:

Reference	Format	Application tested
DDX0043	Purified	Bouin paraffin, Formol paraffin, IHC
DDX0043A488	Alexa-fluor®488	Intra Flow cytometry , IF
DDX0043A546	Alexa- fluor®546	IF
DDX0043A647	Alexa- fluor®647	Intra Flow cytometry
DDX0043B (on request)	Biotin	

Applications: IHC paraffin



Human lymph node section: Formol-paraffin-embedded section was incubated with purified clone 124B3.13 used at 10 μ g/ml and subsequently with secondary biotinylated antibody. Then streptavidine-HRP was added for DAB staining with immunoperoxidase detection kit.

Other application: Flow Cytometry (mouse DCs *in vitro*)

Usage recommendation:

- *This monoclonal antibody may be used between 5-25 μ g/ml.
- *Optimal dilution should be determined by each laboratory for each application.
- *Coupled antibody: to maintain RT before use.

Aliquot storage conditions: -20°C. **KEEP CONTENTS STERILE: no preservative.**
Purified antibodies: avoid repeated freeze/thaw cycles.
Coupled antibodies: glycerol protects from freezing.

Not for use in Humans. For research purpose only