

# Monoclonal Anti-human ASPGR/CD301

**Product reference: DDX0010**

## Description

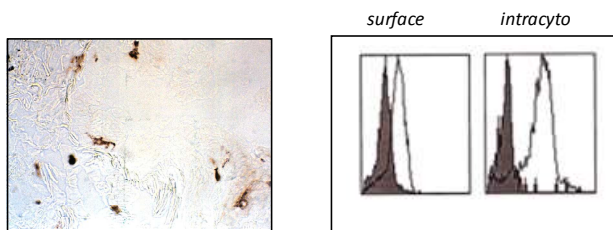
ASGPR/MGL (asialoglycoprotein / macrophage galactose lectin receptor) / CD301 is a Ca<sup>2+</sup> dependent type II transmembrane lectin. Immunoprecipitation from DCs using anti-DC-ASGPR mAb yields a major 40-kDa protein. ASGPR mRNA is observed predominantly in immune tissues (DCs and granulocytes), but not in T, B, or NK cells, or monocytes. ASGPR species are restricted to the CD14<sup>+</sup> derived DCs obtained from CD34<sup>+</sup> progenitors, while absent from the CD1a-derived subset. Accordingly, both monocyte-derived DCs and tonsillar interstitial-type DCs express ASGPR protein, while Langerhans-type cells do not. ASGPR is a feature of immaturity, as its expression is lost upon CD40L activation. In agreement with the presence of tyrosine-based and dileucine motifs in the intracytoplasmic domain, mAb against DC-ASGPR is rapidly internalized by DCs at 37°C. Finally, intracellular ASGPR is localized in early endosomes, suggesting that the receptor recycles to the cell surface following internalization of ligand. ASGPR/HML is a feature of immature DCs and a subtype of macrophages, and likely important for the specialized antigen-capture function of DCs. (*Valladeau J et al, 2001, J. Immunol., 167: 5767*)

<b>Clone:</b>	<b>125A10.03</b>
<b>Species:</b>	mouse
<b>Specificity:</b>	human ASGPR/MGL
<b>Immunogen:</b>	human ASGPR Ig fusion protein
<b>Species cross-reactivity:</b>	nd
<b>Isotype:</b>	IgG1
<b>Purification:</b>	QMA Hyper D ion exchange chromatography
<b>Formulation/size:</b>	<b>Purified:</b> 100 µg in 200 µl / 50 µg in 100 µl Tris-NaCl pH 8
	<b>Coupled:</b> 100 µg in 200 µl / 50 µg in 100 µl PBS 50% glycerol

Available formats: (other clones available on request)

Reference N°		Format	Application tested
50 µg	100 µg		
DDX0010P-50	DDX0010P-100	Purified	IHC, IP, WB, Antigen capture endocytosis
DDX0010A488-50	DDX0010A488-100	Alexa-fluor®488	Surface and intracyto Flow cytometry, IF
DDX0010A546-50	DDX0010A546-100	Alexa- fluor®546	IF
DDX0010A647-50	DDX0010A647-100	Alexa- fluor®647	Surface and intracyto Flow cytometry
DDX0010B-50	DDX0010B-100	Biotin	IP

**Applications tested:** Flow cytometry, IHC on cryosection, antigen-capture endocytosis.



IHC staining of lung cryosection with 125A10.03

FACS analysis of monocyte-derived DCs (GM+IL4) stained with 125A10.03+ goat anti-mouse FITC

**Usage recommendation:**

- \*This monoclonal antibody may be used between 5-20 µg/ml.
- \*Optimal dilution should be determined by each laboratory for each application.
- \*Coupled antibody: to maintain RT before use.

**Aliquot storage conditions:** -20°C. **KEEP CONTENTS STERILE: no preservative.**  
**Purified antibodies:** avoid repeated freeze/thaw cycles.  
**Coupled antibodies:** glycerol protects from freezing.

Not for use in Humans. For research purpose only